

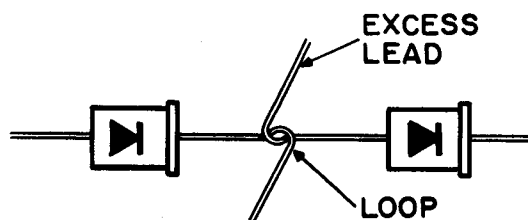
ADDENDUM SHEET – CITATION II

Before proceeding with the construction of your kit, please make the following changes in your assembly and operation manual.

A) Refer to page 10.

- 1) Change step 11 to read, "Hook cathode lead from SD1 with anode lead from SD2 (NS). Do not cut off excess wire. Fragile! Use caution handling leads." (See addendum pictorial, detail A.)

DETAIL A

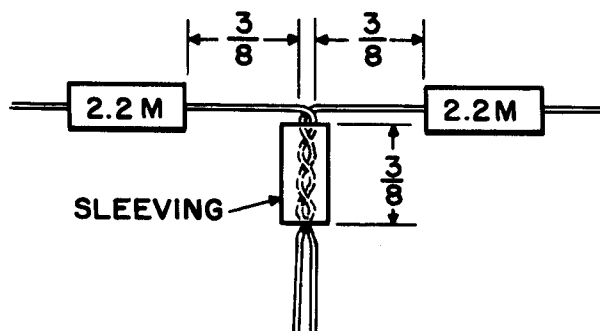


- 2) Change step 12 to read, "Hook anode lead from SD3 with cathode lead SD4 (NS). Do not cut off excess wire."

B) Insert the following 4 steps directly after step 16 on page 10.

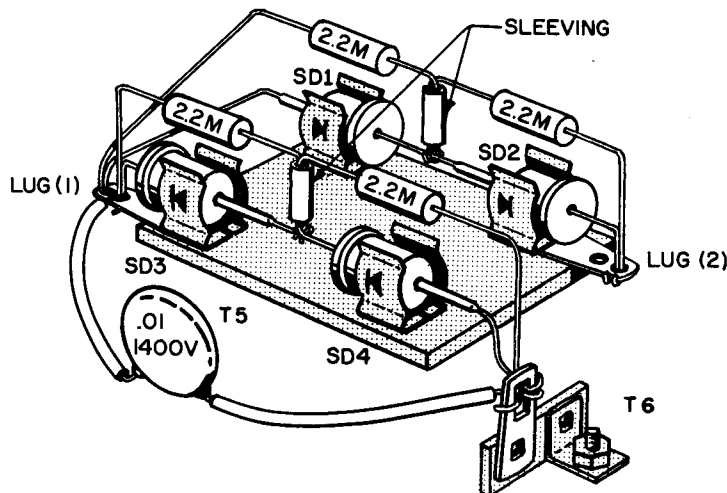
- 3) Twist a pair of 2.2 megohm $\frac{1}{2}$ watt 10% resistors (red, red, green, silver) together as shown in addendum pictorial, detail B. Slip a small piece of sleeving over the twisted leads.

DETAIL B



- 4) Connect the twisted leads of the pair of 2.2 megohm $\frac{1}{2}$ watt 10% resistors (red, red, green, silver) through the loop of SD1 and SD2 (S). Cut off excess wire. Connect one free end of the pair of resistors to T5 lug #1 (NS) and connect the other free end to T5 lug #2 (NS). See addendum pictorial, detail C.

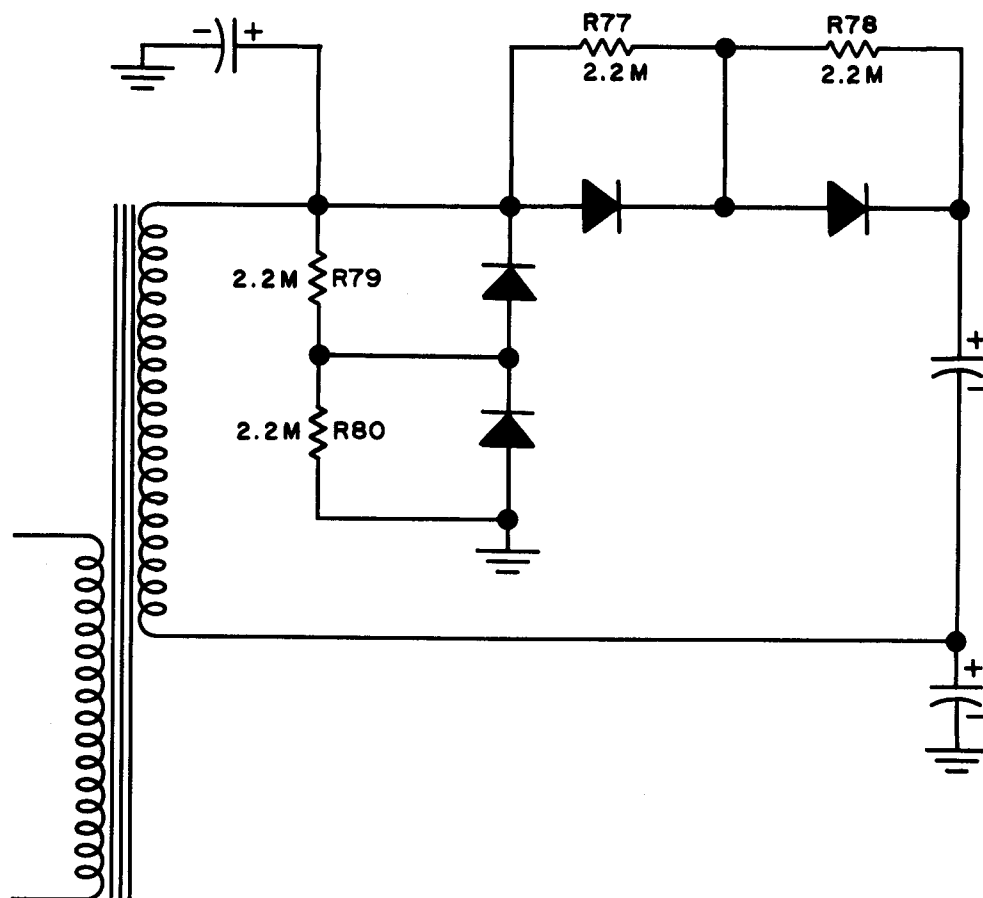
DETAIL C



- 5) Prepare another pair of 2.2 megohm $\frac{1}{2}$ watt 10% resistors (red, red, green, silver) following the procedure outlined in step 3 of this addendum.
- 6) Connect the twisted leads of the pair of 2.2 megohm $\frac{1}{2}$ watt 10% resistors (red, red, green, silver) through the loop of SD3 and SD4 (S). Cut off excess wire. Connect one free end of the pair of resistors to T5 lug #1 (NS). Connect the other free end to T6 lug #2 (NS). (See addendum pictorial, detail C.)

C) Refer to detail D (schematic diagram). Add R77, R78, R79 and R80 to power supply section of schematic on page 18.

DETAIL D



D) Refer to page 34 (replacement parts list) add the following under "Resistors".

RA 225-1	4	2.2 megohm $\frac{1}{2}$ watt 10%
		(red, red, green, silver)

E) Refer to page 16, step 15.

This step reads "Connect A 330 ohm $\frac{1}{2}$ watt 5% resistor (orange, orange, brown, gold) from T4-3 (S) to T4-2 (NS)." Change this step to read "Connect a 300 ohm $\frac{1}{2}$ watt 5% resistor (orange, black, brown, gold) from T4-3 (S) to T4-2 (NS)."

F) Refer to page 19 (schematic diagram) change R76 value from 330 — 5% to 300 — 5% (connected to rotary switch — S1 front).

G) Refer to page 34 (replacements parts list under subheading resistors) line 4.

Change RA151—.5 1 330 ohms $\frac{1}{2}$ watt 5% (orange, orange, brown, gold) to read "RA301—.5 1 300 ohms $\frac{1}{2}$ watt 5% (orange, black, brown, gold)".

H) Refer to pictorial 5, lug strip T4. Change value of resistor connected from lug 2 to lug 3 to read 300 ohms.