

## **Service Bulletin**

**No. :** MZ07-016

**Date:** February 22, 2007

---

**Model:** MA-9S2

**Subject:** Improvement of protective circuit and movement of the level meter.

### **Symptom:**

1) To correct a malfunction of the level meter.

Issue: The level meter deflects more than the actual volume and can show over-range.

2) To improve the function of the protective circuit.

Issue: If the unit receives repeated short circuits at the speaker connection, the speaker relay will be damaged and the fuse opens.

**Solution:** 1) In addition to the existing 100pF capacitors on the surface of the Power Supply PWB (P801), solder one 100pF to each of the C904 and C905 positions on the rear, thereby improving the performance stability.

2) In order to prevent the speaker relay from damage when detecting over current, add the PP01 latch PWB. The latch PWB consists of circuitry that keeps the protective circuit ON after being activated upon detecting over current. The protective circuit stays ON until the power is reactivated.



PP01 Latch PWB

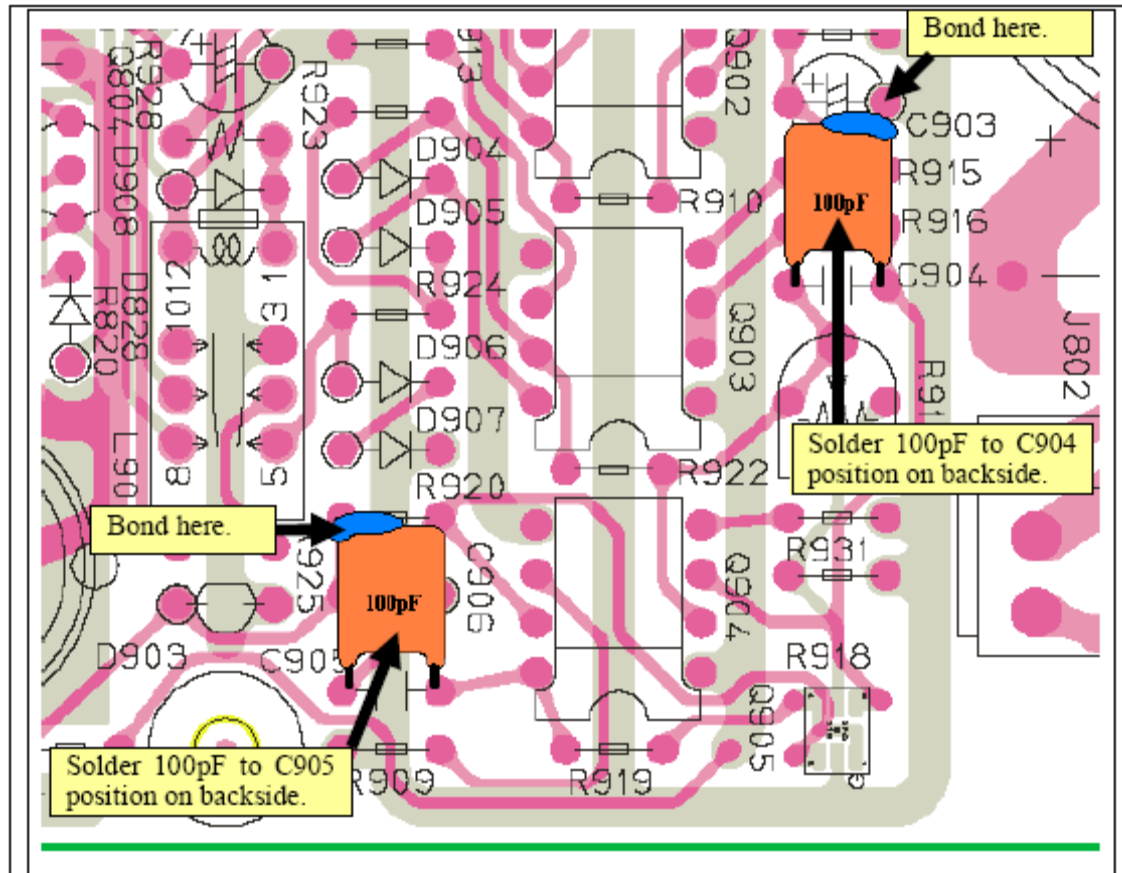
---

### **CONFIDENTIALITY NOTICE:**

The information contained in this document is intended for the exclusive use by MARANTZ Authorized Service Centers and their employees. This document may contain information that is privileged, confidential and may be protected from disclosure under applicable laws and terms of the MARANTZ Service Agreement. Any distribution, disclosure, dissemination or copying of this document and the information it contains is prohibited. No responsibility will be accepted by MARANTZ for any damage, injury or loss resulting from the misuse of the information contained in this document.

To correct the malfunction of the level meter perform the following:

1. Add (solder) 2 100pF caps onto the rear of the POWER SUPPLY PWB (P801)



A) As shown above, please solder and bond the capacitors to the board.  
Capacitor Part No: 00MOF15101540. Part name: APSV 100V J 100pF

B) For bonding, please use SONY Chemical SC608LVZ or the equivalent.

#### CONFIDENTIALITY NOTICE:

The information contained in this document is intended for the exclusive use by MARANTZ Authorized Service Centers and their employees. This document may contain information that is privileged, confidential and may be protected from disclosure under applicable laws and terms of the MARANTZ Service Agreement. Any distribution, disclosure, dissemination or copying of this document and the information it contains is prohibited. No responsibility will be accepted by MARANTZ for any damage, injury or loss resulting from the misuse of the information contained in this document.

2. Add the PP01 Latch PWB to the MAIN PWB (P601) to prevent the relay from automatically clearing short-circuits.

Supplementary PWB: (P101) LATCH PWB ASSY includes the following:

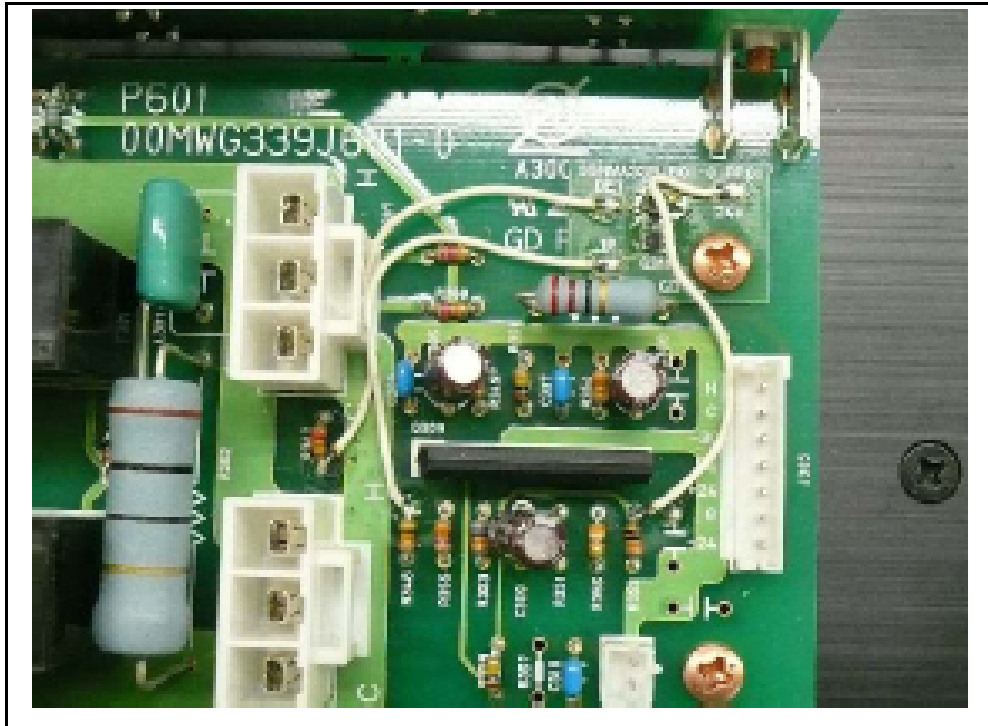
Q311: Part No: 00MBA20021210

DTC144EU (Package No: 26)

Q312: Part No: 00MBA10014210

DTA144EU (Package No: 16)

For bonding, please use SONY Chemical SC608LVZ or the equivalent.



---

**CONFIDENTIALITY NOTICE:**

The information contained in this document is intended for the exclusive use by MARANTZ Authorized Service Centers and their employees. This document may contain information that is privileged, confidential and may be protected from disclosure under applicable laws and terms of the MARANTZ Service Agreement. Any distribution, disclosure, dissemination or copying of this document and the information it contains is prohibited. No responsibility will be accepted by MARANTZ for any damage, injury or loss resulting from the misuse of the information contained in this document.

