

## **Service Bulletin**

**No. :** MZ08-025\_2nd

**Date:** May 20, 2008

**Model:** SA-7S1, SA-11S2

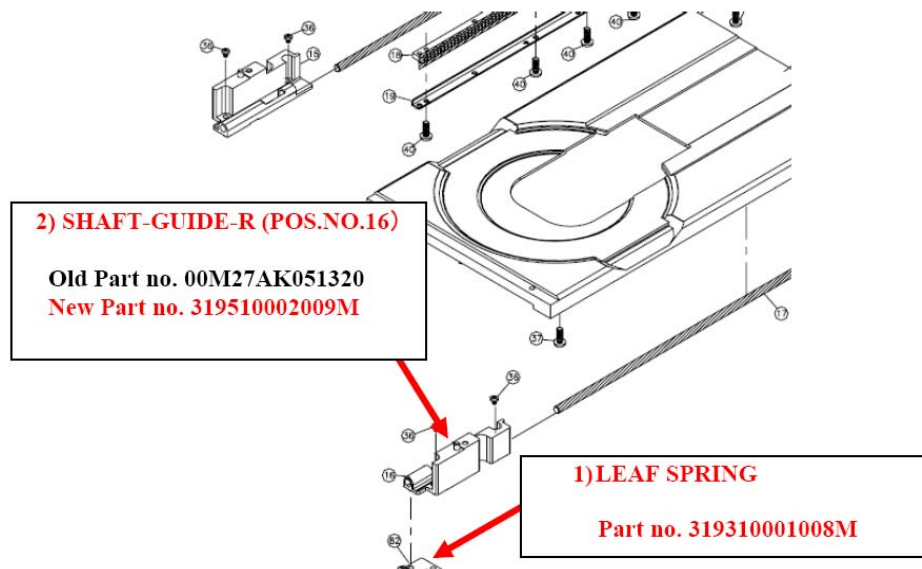
**Subject:** Irregular operation improvement by static electricity

\* This update is only intended for units with the following minor problem and is not required for all units.

**Symptom:** When the tray is opened for loading a disc, static charges from the disc or the human body can go into the microprocessor through the metal tray and cause glitches.

**Solution:** The TRAY SHAFT and the CHASSIS will be contacted with a LEAF SPRING in between so that the tray will be grounded.

- 1) One LEAF SPRING added
- 2) SHAFT-GUIDE-R (POS. NO. 16) to be replaced (The depth of the recess the LEAF SPRING is installed in has been changed to 0.1mm.)



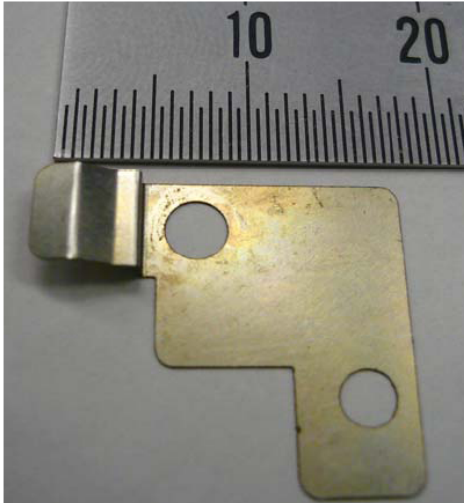
### **CONFIDENTIALITY NOTICE:**

The information contained in this document is intended for the exclusive use by MARANTZ Authorized Service Centers and their employees. This document may contain information that is privileged, confidential and may be protected from disclosure under applicable laws and terms of the MARANTZ Service Agreement. Any distribution, disclosure, dissemination or copying of this document and the information it contains is prohibited. No responsibility will be accepted by MARANTZ for any damage, injury or loss resulting from the misuse of the information contained in this document.

## HOW TO INSTALL A LEAF SPRING AND REPLACE THE SHAFT-GUIDE-R (POS. NO. 16)

The pictures below show the parts to be installed or replaced.

1) LEAF SPRING



2) SHAFT-GUIDE-R (POS. NO. 16)

Old Part no. 00M27AK051320



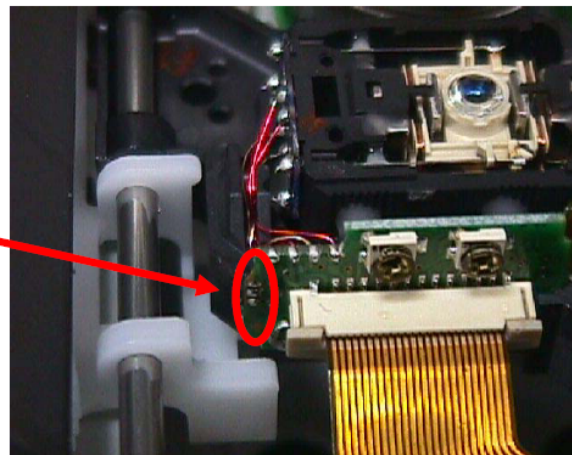
New

The depth of the recess on this surface has been changed to 0.1mm.

### Procedure

1. **CAUTION** Optical pick up and Super Audio CD PWB Module. When removing the flexible cables between Optical pick up and Super Audio CD PWB Module, Solder the lands pointed by arrows to short the circuit. Otherwise the LASER DIODE may be damaged by static electricity.

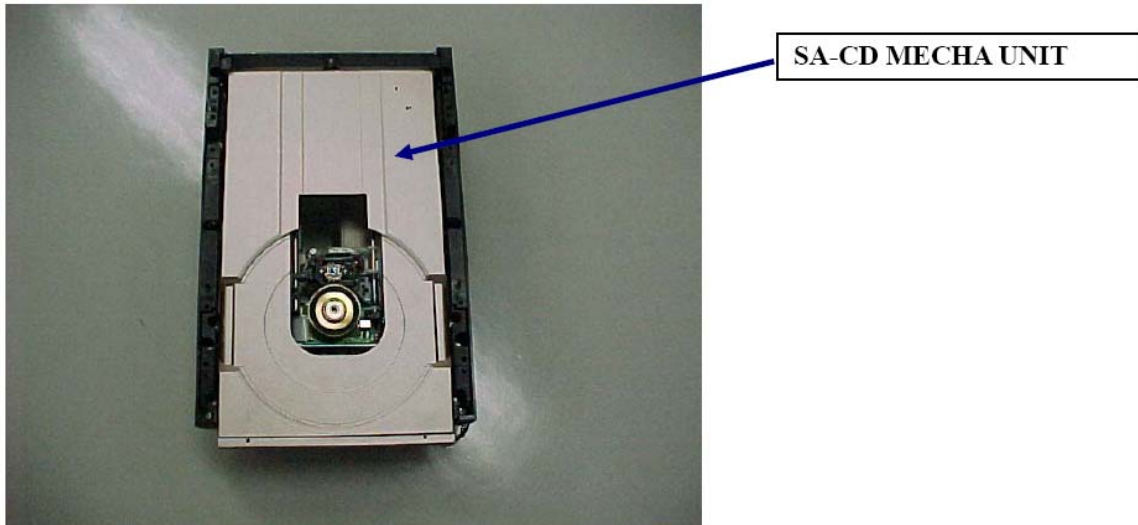
- \* Three separate land pads near the pickup on the board. Solder and sort all these three land pads.
- \* After shorting the land pads, unplug\* the flexible cables from the connector on the board.
- \* When the all the work is done with the flexible cables plugged, remove the solder first and then close the loader lid.



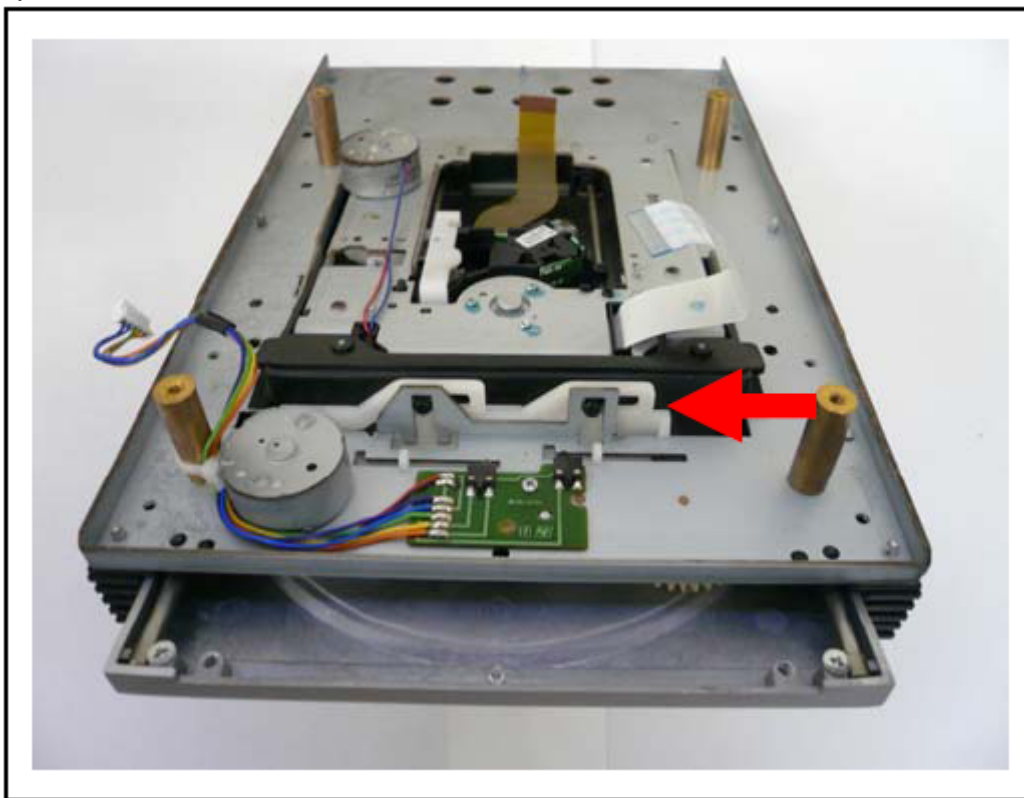
### CONFIDENTIALITY NOTICE:

The information contained in this document is intended for the exclusive use by MARANTZ Authorized Service Centers and their employees. This document may contain information that is privileged, confidential and may be protected from disclosure under applicable laws and terms of the MARANTZ Service Agreement. Any distribution, disclosure, dissemination or copying of this document and the information it contains is prohibited. No responsibility will be accepted by MARANTZ for any damage, injury or loss resulting from the misuse of the information contained in this document.

2. Remove the SA-CD MECHA UNIT from the product body.



3. Push in the direction of the arrow the CAM that moves the TRAVERS (Pickup) up and down, so as to move down the Traverse.

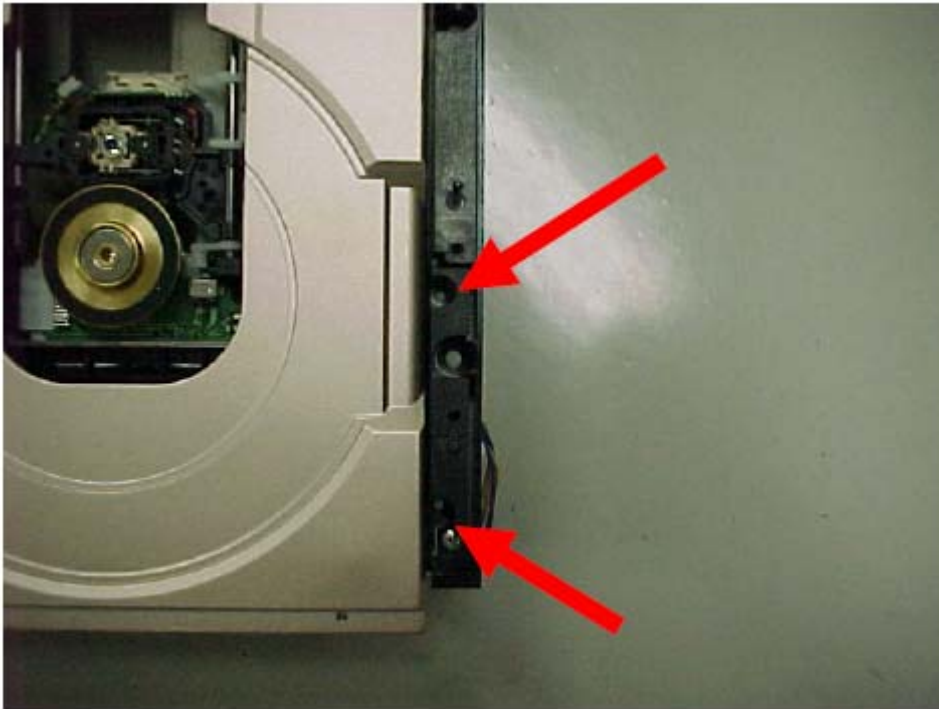


---

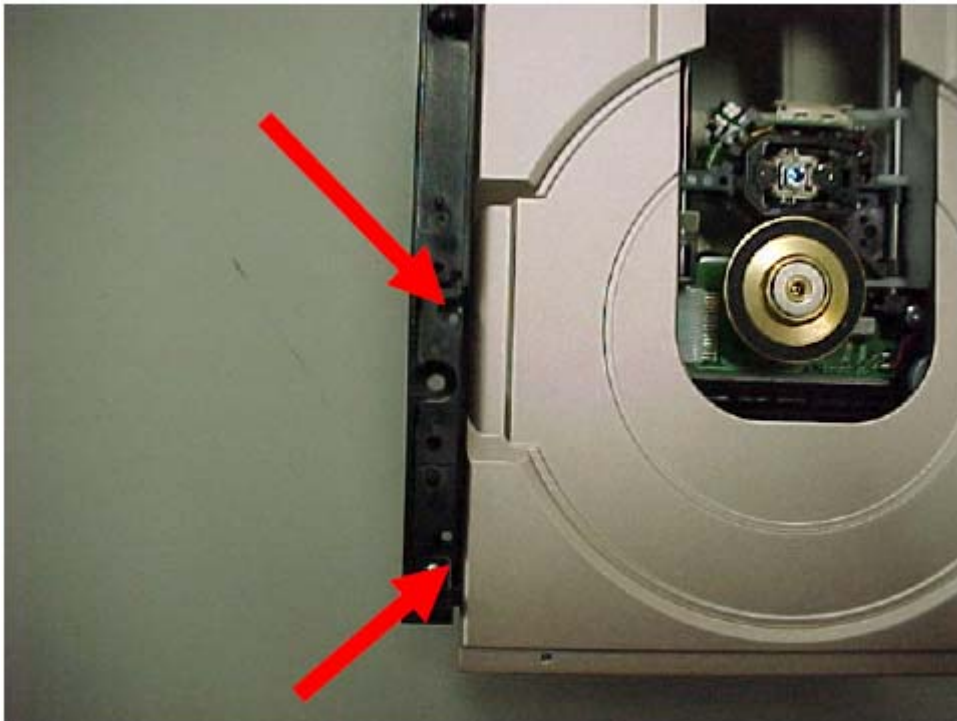
#### **CONFIDENTIALITY NOTICE:**

The information contained in this document is intended for the exclusive use by MARANTZ Authorized Service Centers and their employees. This document may contain information that is privileged, confidential and may be protected from disclosure under applicable laws and terms of the MARANTZ Service Agreement. Any distribution, disclosure, dissemination or copying of this document and the information it contains is prohibited. No responsibility will be accepted by MARANTZ for any damage, injury or loss resulting from the misuse of the information contained in this document.

4. Take out the two screws in the right side of the TRAY.



5. Take out the two screws in the left side of the TRAY.



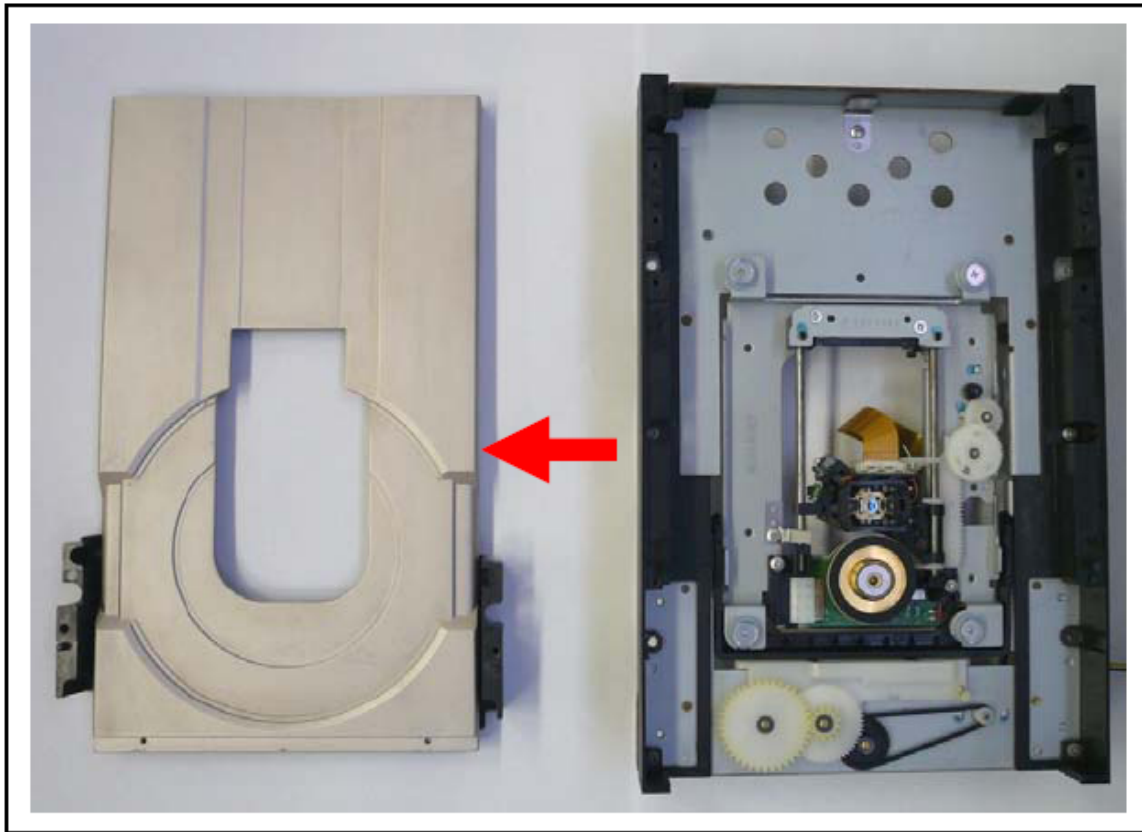
---

**CONFIDENTIALITY NOTICE:**

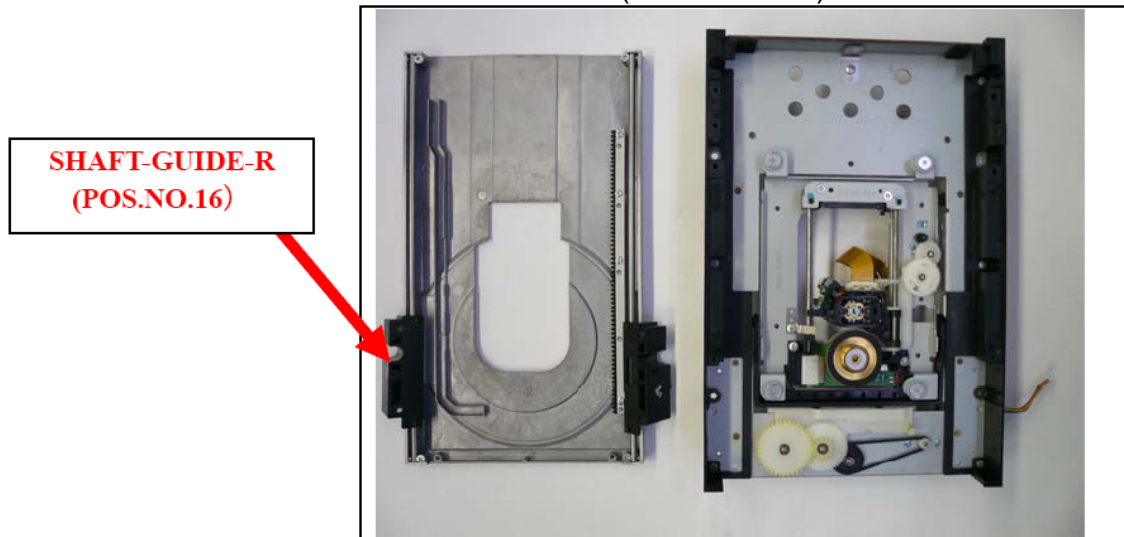
The information contained in this document is intended for the exclusive use by MARANTZ Authorized Service Centers and their employees. This document may contain information that is privileged, confidential and may be protected from disclosure under applicable laws and terms of the MARANTZ Service Agreement. Any distribution, disclosure, dissemination or copying of this document and the information it contains is prohibited. No responsibility will be accepted by MARANTZ for any damage, injury or loss resulting from the misuse of the information contained in this document.



6. Remove the TRAY. (Be careful not to damage the TRAY; it is an exterior component.)



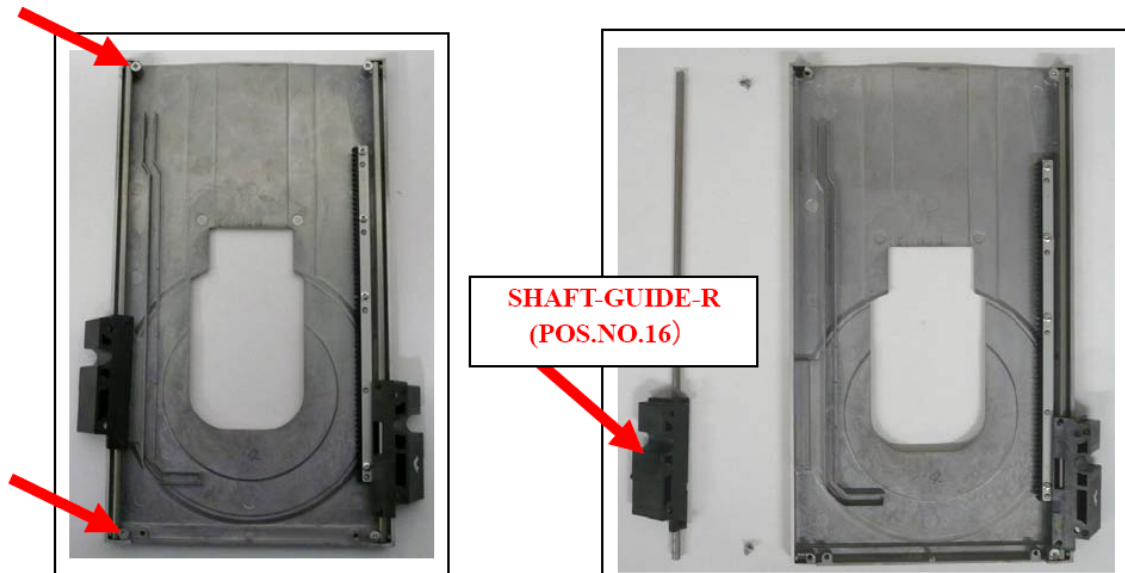
HOW TO REPLACE THE SHAFT-GUIDE-R (POS. NO. 16)



#### CONFIDENTIALITY NOTICE:

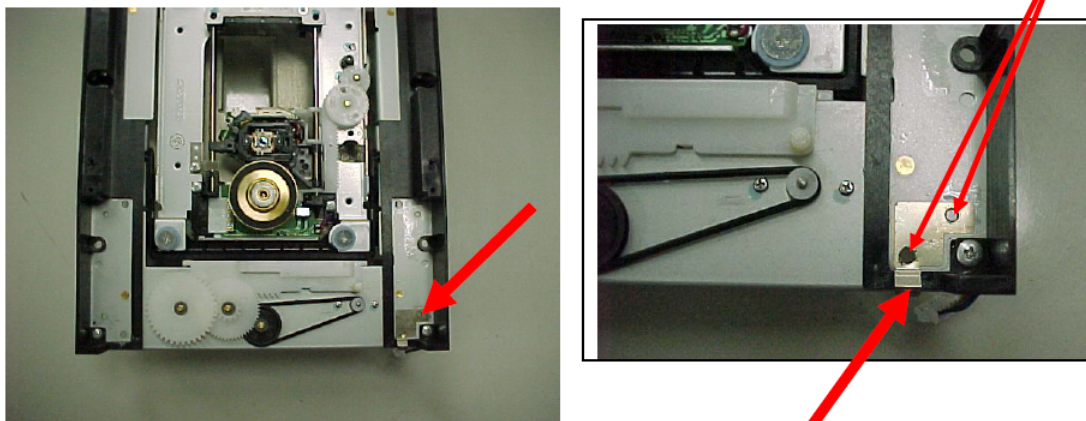
The information contained in this document is intended for the exclusive use by MARANTZ Authorized Service Centers and their employees. This document may contain information that is privileged, confidential and may be protected from disclosure under applicable laws and terms of the MARANTZ Service Agreement. Any distribution, disclosure, dissemination or copying of this document and the information it contains is prohibited. No responsibility will be accepted by MARANTZ for any damage, injury or loss resulting from the misuse of the information contained in this document.

7. Take out the two screws that hold the TRA-SHAFT.
8. Replace the SHAFT-GUIDE-R (POS. NO. 16).



#### HOW TO INSTALL THE LEAF SPRING AND REASSEMBLE THE UNIT.

9. Place the LEAF SPRING in the position shown in the picture below. Match the two holes of the chassis and those of the LEAF SPRING.

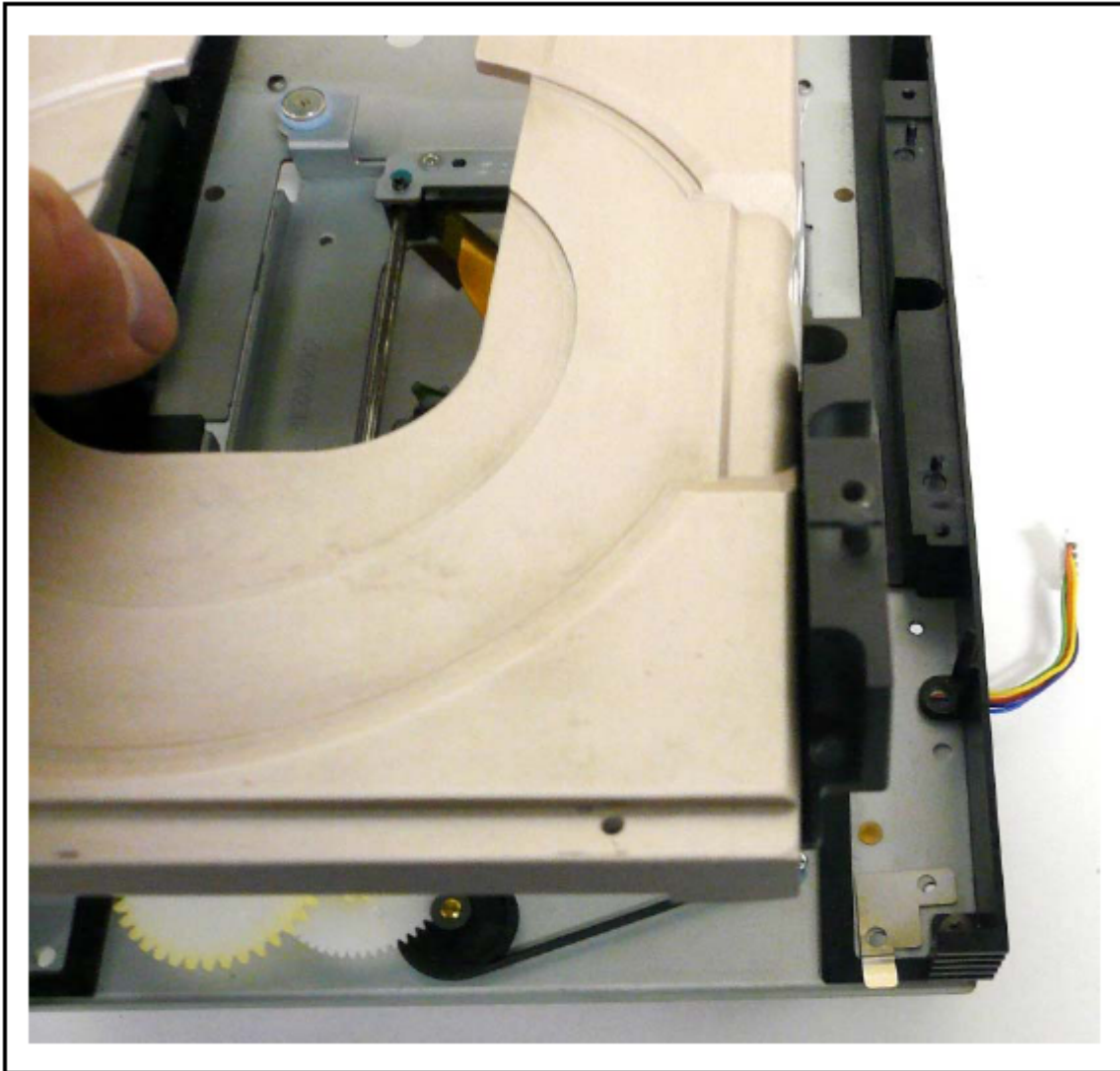


**This part contacts the SHAFT, thereby grounding the TRAY.**

#### CONFIDENTIALITY NOTICE:

The information contained in this document is intended for the exclusive use by MARANTZ Authorized Service Centers and their employees. This document may contain information that is privileged, confidential and may be protected from disclosure under applicable laws and terms of the MARANTZ Service Agreement. Any distribution, disclosure, dissemination or copying of this document and the information it contains is prohibited. No responsibility will be accepted by MARANTZ for any damage, injury or loss resulting from the misuse of the information contained in this document.

10. Tuck the LEAF SPRING and put back the TRAY where it was.



11. Reverse the disassembly procedure when reassembling it.

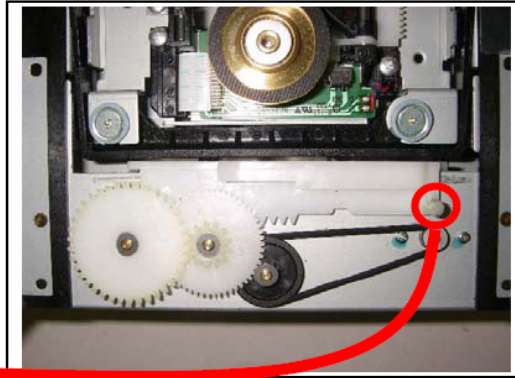
Notes on reassembly

When reassembling the TRAY, make sure that the slide cam boss is placed where it was before the unit was disassembled (when the TRAY was closed).

---

**CONFIDENTIALITY NOTICE:**

The information contained in this document is intended for the exclusive use by MARANTZ Authorized Service Centers and their employees. This document may contain information that is privileged, confidential and may be protected from disclosure under applicable laws and terms of the MARANTZ Service Agreement. Any distribution, disclosure, dissemination or copying of this document and the information it contains is prohibited. No responsibility will be accepted by MARANTZ for any damage, injury or loss resulting from the misuse of the information contained in this document.



The slide cam boss goes into the TRAY chase.

### Parts:

Ref#	Description	Part Number
NA	LEAF SPRING	319310001008M
NA	SHAFT GUIDE R	319510002009M

### Serial Number Range:

This problem applies to the following serial number.

1) SA-7S1 applies to 20000813xxxxxx and earlier.

This improvement has been done in production from serial number 20000814xxxxxx and after.

2) SA-11S2 applies to 20000814xxxxxx and earlier.

This improvement has been done in production from serial number 20000815xxxxxx and after.

### CONFIDENTIALITY NOTICE:

The information contained in this document is intended for the exclusive use by MARANTZ Authorized Service Centers and their employees. This document may contain information that is privileged, confidential and may be protected from disclosure under applicable laws and terms of the MARANTZ Service Agreement. Any distribution, disclosure, dissemination or copying of this document and the information it contains is prohibited. No responsibility will be accepted by MARANTZ for any damage, injury or loss resulting from the misuse of the information contained in this document.