

marantz®

SR6001 Workshop



because music matters



marantz®

SR6001 background

There is a lot of competition in the A/V receiver market:
New technologies and features are going fast to lower models,
Features of competition are very similar to ours.

Main differentiation on our A/V Receivers:

HDMI switching (No Path through)

Full Video-Up conversion to HDMI with I/P conversion

New DSP (Texas Instruments TM320DA708 [SR8001/7001/6001])

Audyssey MultEQ (SR8001/7001/6001)

Dolby virtual Speaker for Virtual surround (SR8001/7001/6001)

Shallow Depth

because music matters



marantz®

Front

Source selection

Dot Matrix Display

Volume control



Power button
and Headphone

Behind the front panel is Hidden;
- Audyssey control
- Menu control
- Surround selection

Front inputs

because music matters



marantz®

SR6001 connectivity

2x HDMI ver1.2 IN / 1x OUT

4x component video IN/2x OUT

RS232



D-bus In/Out
DC Triggers
IR Flasher
input

7.1 preamp analog OUT
&
7.1 discrete analog IN

Speaker terminals with
additional backpanel Isolation

because music matters

marantz®

SR6001 Inside...

To create a swallow depth total chassis is modified.

- The power amp is directly placed behind the front panel (was in depth placed)
- All connection boards are horizontal placed on top of each other (instead of vertical)
- The power supply board is placed vertical to create more space for the shielded toroidal transformer

because music matters



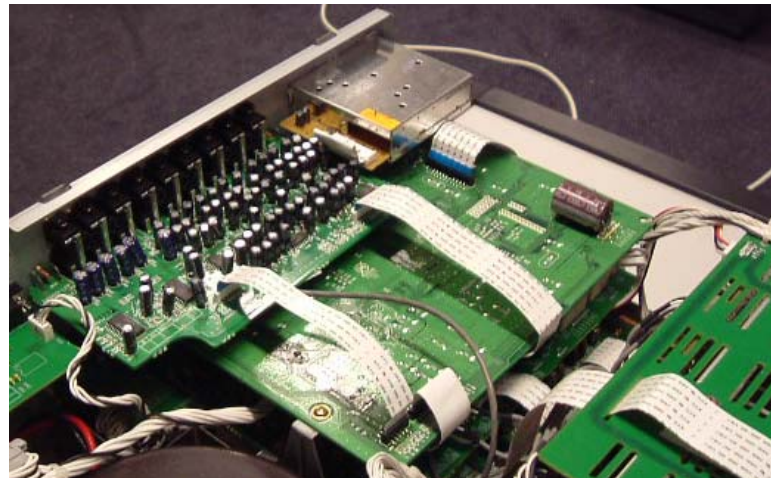
marantz®

SR 6001 Inside...

Connectivity boards

The boards for component video, HDMI, composite /S-Video, Digital and Analog inputs and outputs, are placed on top of each other.

Besides the space created to use a strong power supply also the connection for the Sources has become more convenient.



because music matters



marantz®

SR 6001 Inside...

7 x 100W/CH Power amp

The power amplification section is direct parallel placed behind the front panel creating less depth, and is therefore more convenient placed because of the created space needed for the extra strong Power supply.

The power amp is completely discrete build and mounted to a ridged heat sink.

A strong power supply and discrete build power ampstage stand for:

- *Dynamics when you need them,*
- *Tight and ridged bass,*
- *Fast responding sound stages*

because music matters



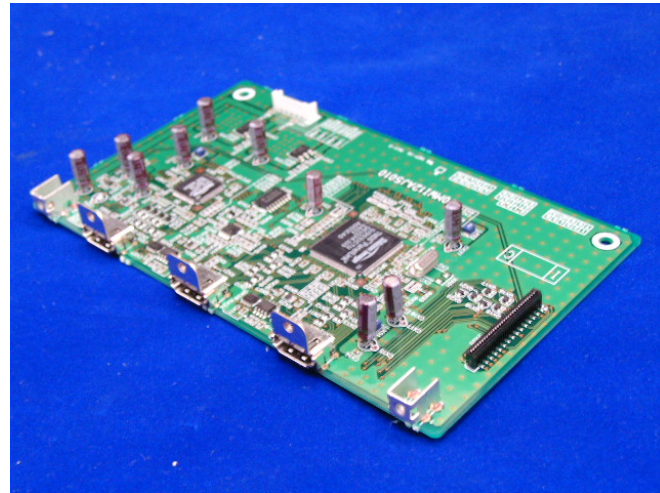
marantz®

SR6001 HDMI switching

The SR6001 has 2 times HDMI(1.2) in and 1 time HDMI(1.1) out.

The HDMI inputs are able to switch all video signals up to 1080p, and are able to derive all multichannel PCM High resolution audio formats including DVD-A and SACD out of the HDMI signal.

Because of the backwards compatibility of HDMI v1.3 the SR6001 makes it possible to do switching and path through for this new standard, therefore the SR6001 will be compatible with future sources and formats.



because music matters



marantz®

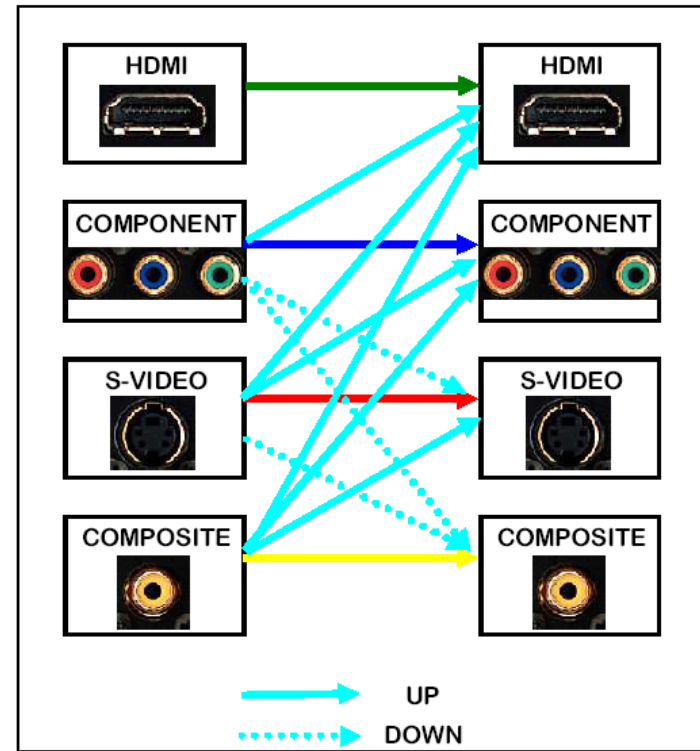
SR6001 Video switching

Video switching and conversion.

All video signals can be up and down converted in the analog video Circuitry.

All analog video signals can be up converted to HDMI level even from composite level.

Flexibility in connectivity of sources and display devices.



because music matters



marantz®

SR6001 Video switching

Time base correction

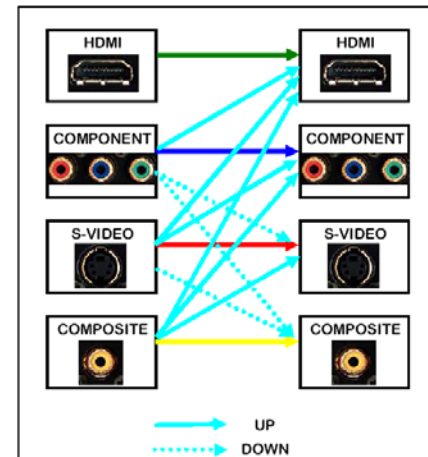
Analog video signals provided to the SR6001 might be distorted or weak of signal.

The SR6001 has a video conversion circuitry with **Time Base Correction**.

Time base correction cleans up the signal and amplifies the signal when needed to the level of the original values.

Result;

The same beautiful picture quality on your TV set from ALL your sources!!!



because music matters



marantz®

SR6001 Video switching

I/P conversion.

When the analog signal is brought back into it's original condition
The SR6001 is able to output the signal digital via HDMI.

A special Interlaced to Progressive circuitry is used in the analog part of
the video conversion circuit to make the video signal Progressive

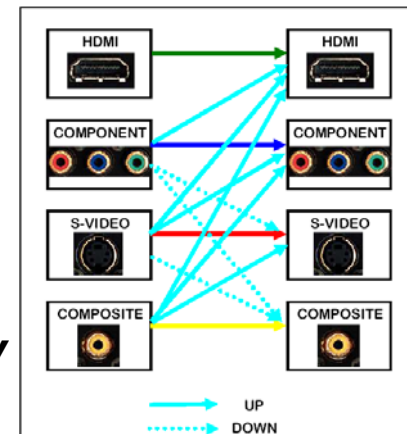
This analog progressive video signal will be
made digital via HDMI and be outputted as
480/576P video signal.

The advantage;

No additional calculation for Video needed.

The result;

***A very smooth digital video signals without any
digital artifacts or digital distortion.***



because music matters

marantz®

SR6001

AUDYSSEY

The SR6001 is equipped with Audyssey Multeq room acoustic measurement.

Audyssey Multeq:

- Corrects sound distortion caused by Room acoustics.
- First technology to measure sound throughout the listening area.
- First available solution to acoustic problems for anyone who who appreciates great sound.
- Calculates an equalization solution that corrects both time and frequency response problems in every seat.

because music matters



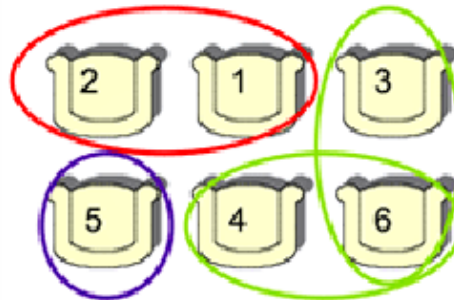
marantz®

SR6001

AUDYSSEY

Multeq operation in 3 steps

- 1 Plug in the microphone and place in the of the listening area, Push a button and wait while Multeq pings each speaker with special signals.
- 2 Move the microphone up to 6 position and wait for each position the speaker to be pinged.
- 3 Multeq calculates the room correction solution for each channel.



because music matters



marantz®

SR6001

AUDYSSEY

Acoustic adjustments

After the measurement is done by Audyssey Multeq EQ
You are able to check the settings made.

You will find this function on OSD
menu 6, function CHECK AUTO.



because music matters



marantz®

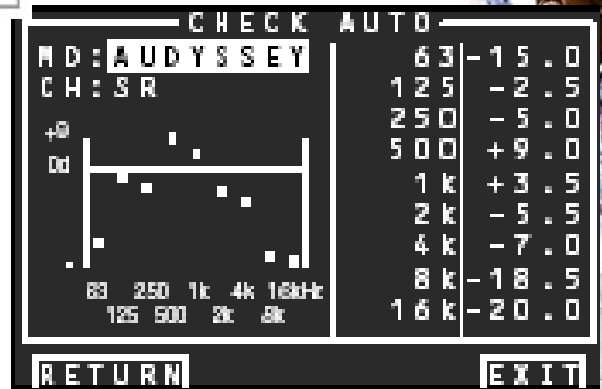
AUDYSSEY

SR6001

Acoustic adjustments

Within the **CHECK AUTO** menu you can select

- Audyssey : Settings made by measurement
- Front : All channels will be set according to front channel setting
- Flat : In this position all channels are in flat position which is most suitable for DD and DTS playback
- Off : In this position the Graphic Equalizer is not used



When inside the equalizer menu you have the ability to readjust each Channel on frequency level separately according to your own requirements.

Because of this flexibility you get the most natural sound with your own feeling.

because music matters



marantz®

Dolby Virtual speaker



When you have not enough space in your environment Dolby® Virtual Speaker simulates a high realistic 5.1-speaker setup experience in your listening environment derived from as few as two speakers.

Features:

- Realistic 5.1 surround sound from just two speakers.
- No need to buy extra speakers, wires, or speaker stands.
- Provides two surround listening modes: Reference and Wide.

Benefits:

- Ideal for environments where a 5.1 speaker system is not practical.
- Delivers the most accurate virtual surround sound experience.
- Reproduces the sonic spectrum and dynamics of a 5.1-channel speaker system

A real home cinema experience out of 2 speakers.

because music matters



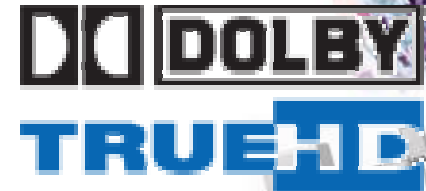
marantz®

SR6001 new format support

The SR6001 has 2 possible ways to reproduce The new high resolution 8 channel formats:

1. **Connected via 7.1 channel input.**
Signal decoding will be done in the player itself and an analogue signal will be send to the receiver.
2. **Connected via HDMI input:**
HD-DVD or Blue Ray are able to output high resolution uncompressed 8 x 96KHz/24 bit PCM signal. The SR6001 has 8 decoders on board to Process these signals and offering high resolution audio.

The SR6001 is therefore future proof for all upcoming High resolution audio formats



marantz®

Additional Featuring

- **Multi-Room Setup**

Within the preferences menu you are able to setup.

In this setup field you are able to select outputted source,
Volume level (fix/var),
Multi speakers (yes/no)



because music matters



marantz®

Additional Featuring

SR6001 Multi speakers.

Because the SR6001 is equipped with 7 channels and most common installations are 5.1 setups. There is the possibility to use the surround back Channels for the multi room environment

This can be easily done by setting the Surround back speaker setting in the Speaker-setup menu to "none"

On the remote control or on the OSD menu (multi room setup) you can easily activate the Multi room speakers.

2 separate rooms driven out of one AV receiver without any additional amplifier

because music matters



marantz®

Additional Featuring

- **Video Setup**

Within this menu
you are able to set some settings
regarding the Video functionality
of the SR6001.



In this setup field you are able to set:

- TV auto (switch on SR6001 as soon as a signal is detected on TV Input)
- OSD info On/Off
- I/P conversion On/Off
- HDMI output Enable/Disable

because music matters



marantz®

SR6001 Key features

- HDMI 1.2 (switching and path-through for HDMI 1.3)
- Full video up conversion to HDMI
- I/P conversion
- Audyssey MultEq
- Dolby virtual surround
- Multi room/ Multi source
- Swallow depth



because music matters



marantz®

SR6001 competitors

- **Onkyo TX-SS804E Euro 999**

7 x 140 W, THX DB-digital/DTS, Room acoustic measurement, 2 HDMI in/1 out, Up conversion from component to HDMI, Multi-room/Multi source

No I/P conversion for the analog to HDMI converted video signals brings a negative effect to the video performance resulting in lipsync problems and digital artifacts

- **Denon AVR-2307 Euro 899**

7 x 135W, DB-digital/DTS, Room acoustic measurement, 2 HDMI in 1 HDMI out (1080p), Up conversion from analog video signals to HDMI, Lip-sync, Multi-room/Multi source

- **Yamaha RX-V1700 Euro 999**

7 x 130W, DB-digital/DTS, Room acoustic measurement, 2 HDMI in/1out (ver 1.2a), Up conversion from analog video signals to HDMI with De-interlacing, Multi-room/multi source with additional multi room remote supplied.

- **Harman Kardon AVR-445 Euro 999**

7 x 80W, DB-digital/DTS,, 2 HDMI in/1out , Up conversion from analog video signals to HDMI with De-interlacing, Multi-room/multi source A-bus Ready, additional multi room remote supplied.

because music matters



marantz®

SR6001

The SR6001 is a ridged build AV receiver, providing a solid and tight bass and a dynamic acoustic behavior which makes it able to be a very good performer for AV as well on Hifi purposes.

The SR6001 is equipped with the latest features and utilizes a latest generation HDMI board making HDMI switching and path through compatible with HDMI version 1.3 .

Therefore the SR6001 is ready for the future formats such as Dolby Digital HD and DTS true HD which will be introduced on HD-DVD and Blue ray players.

The Exclusive Audyssey Room acoustic Measurement tool enables the possibility to build the most secure performing AV Setup made by every customer possible.

because music matters

