

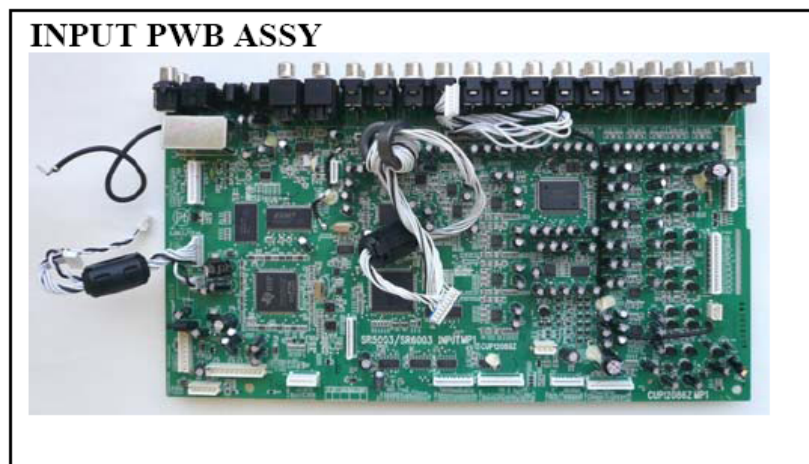
**Model:** SR5003, SR6003

**Subject:** INPUT PWB changed to delete soldered wires on the PWB. (The PWB changed for the improvement of product quality.)

**Symptom:** The main changed parts are the following. Please refer to SCHEMATIC DIAGRAM, PARTS LOCATION and PARTS LIST for details.

**Solution:**

1. INPUT PWB: the layout and pattern changed.
2. INPUT PWB POS.NO. CN83: Changed into a connector from a connector with CORD.
3. Connection Wire: CN83 (FRONT PWB) and BN83 (INPUT PWB) was changed.
4. FRONT PWB POS.NO. CN83 (BN83): Changed into a connector with CORD from a connector.

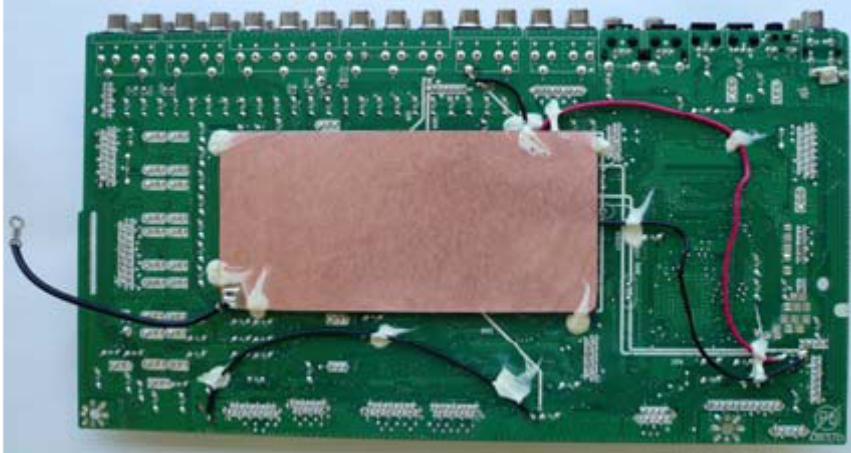


---

**CONFIDENTIALITY NOTICE:**

The information contained in this document is intended for the exclusive use by MARANTZ Authorized Service Centers and their employees. This document may contain information that is privileged, confidential and may be protected from disclosure under applicable laws and terms of the MARANTZ Service Agreement. Any distribution, disclosure, dissemination or copying of this document and the information it contains is prohibited. No responsibility will be accepted by MARANTZ for any damage, injury or loss resulting from the misuse of the information contained in this document.

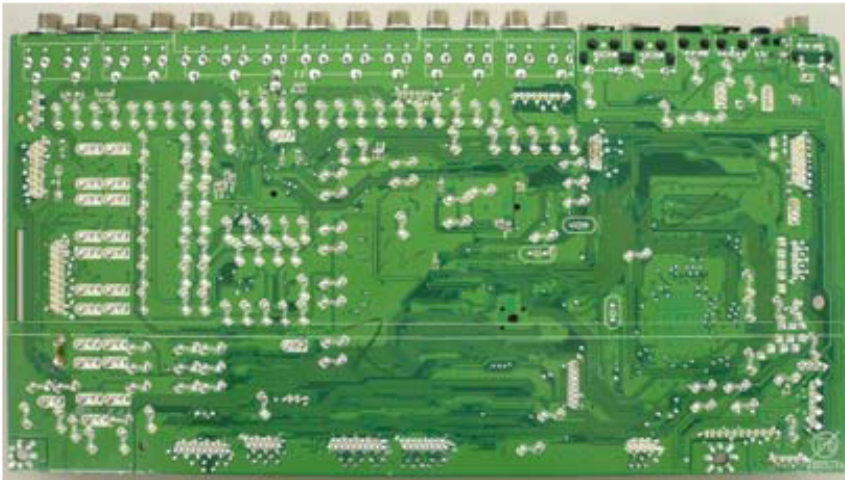
**OLD PWB Bottom side**



**Changed**



**NEW PWB Bottom side**



---

**CONFIDENTIALITY NOTICE:**

The information contained in this document is intended for the exclusive use by MARANTZ Authorized Service Centers and their employees. This document may contain information that is privileged, confidential and may be protected from disclosure under applicable laws and terms of the MARANTZ Service Agreement. Any distribution, disclosure, dissemination or copying of this document and the information it contains is prohibited. No responsibility will be accepted by MARANTZ for any damage, injury or loss resulting from the misuse of the information contained in this document.

**Caution:** If replacing the INPUT PWB ASSY with a NEW INPUT PWB ASSY, The part no 943612004690S is required. NECESSARY PARTS are as follows:

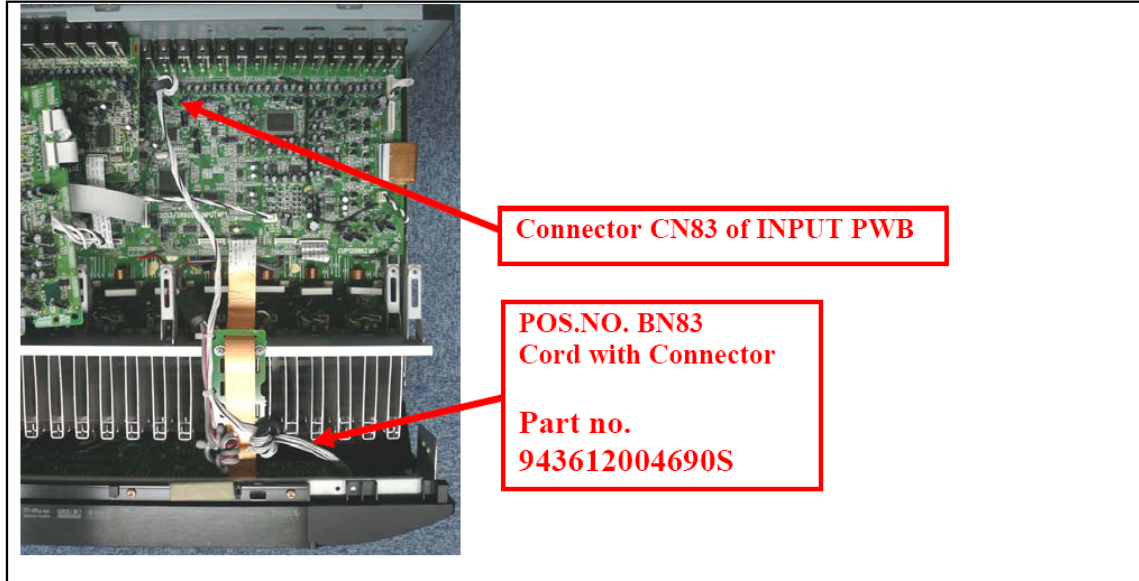
**SR5003, SR6003**

POS. NO.	VERS. COLOR	PART NO. (FOR EUR)	PART NO. (MZ)	PART NAME	DESCRIPTION
BN83	-	943612004690S	943612004690S	CORD	9P WIRE ASSY 550MM Factory code no. CWB2B909550EN

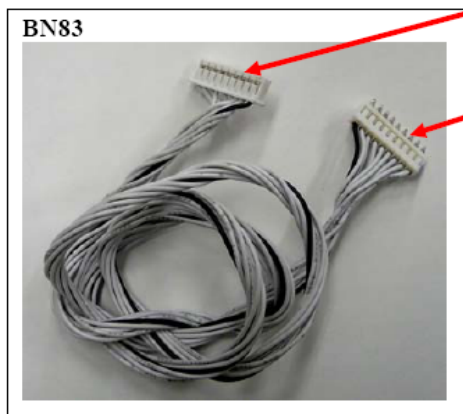


**CONFIDENTIALITY NOTICE:**

The information contained in this document is intended for the exclusive use by MARANTZ Authorized Service Centers and their employees. This document may contain information that is privileged, confidential and may be protected from disclosure under applicable laws and terms of the MARANTZ Service Agreement. Any distribution, disclosure, dissemination or copying of this document and the information it contains is prohibited. No responsibility will be accepted by MARANTZ for any damage, injury or loss resulting from the misuse of the information contained in this document.



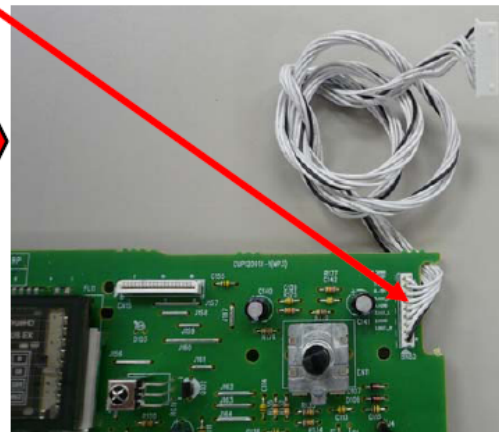
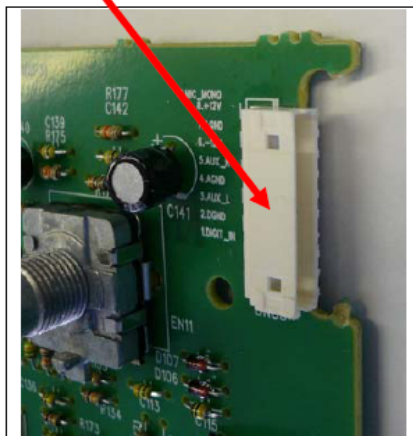
**FRONT PWB POS.NO. CN83 Connector replacement procedure:**



**Connect this Cord to CN83 INPUT PWB.**

**This connector is soldered to Front PWB.**

**CN83 (Connector) is removed and BN83 (Cord with Connector) is soldered to Front PWB.**



**CONFIDENTIALITY NOTICE:**

The information contained in this document is intended for the exclusive use by MARANTZ Authorized Service Centers and their employees. This document may contain information that is privileged, confidential and may be protected from disclosure under applicable laws and terms of the MARANTZ Service Agreement. Any distribution, disclosure, dissemination or copying of this document and the information it contains is prohibited. No responsibility will be accepted by MARANTZ for any damage, injury or loss resulting from the misuse of the information contained in this document.

## **Serial Number Range:**

Applicable S/N range:

SR5003: MZ000829000001 ~ MZ0008xx002700

SR6003: MZ000833000001 ~ MZ0008xx001100

S/N range of products changed in mass production:

SR5003: MZ0008xx002701 ~

SR6003: MZ0008xx001100 ~

---

### **CONFIDENTIALITY NOTICE:**

The information contained in this document is intended for the exclusive use by MARANTZ Authorized Service Centers and their employees. This document may contain information that is privileged, confidential and may be protected from disclosure under applicable laws and terms of the MARANTZ Service Agreement. Any distribution, disclosure, dissemination or copying of this document and the information it contains is prohibited. No responsibility will be accepted by MARANTZ for any damage, injury or loss resulting from the misuse of the information contained in this document.