

The Operating Manual for
updating of A/V receiver/amplifier firmware

DFW (D&M Firmware Writer)

Model Name	SR 7005/U,5005/N
Version	DFW_0005_SR7005_(Rev.1.0.13)
Date	2010-06-15

marantz

Index

1. Preparations before starting the operation:	3
1.1 Preparation for the Personal Computer:	3
1.2 Preparations for the cables.	3
1.3 Connection of the A/V receiver/amplifier and PC	4
1.4 Install the D&M Firmware Writer.	4
2. Procedure of updating for firmware.	5
2.1 Notice:	5
2.2 Procedure of updating for firmware.	5
2.3 Check the communication between A/V amplifire and PC.	6
2.4 Start the firmware update	7
2.6 Complete the firmware update.	7
3. Confirming the firmware's number after upgraded.	8
4. Error massages and countermeasurement	9~10
5. Setting of "Run this program in compatibility mode" for Windows Vista	11~13
6. Setting of "Run this program in compatibility mode" for Windows 7	14~16

1. Preparations before starting the operation:

1.1 Preparation for the Personal Computer:

Minimum hardware and software requirements:

Type	PC/AT compatible
CPU	Intel Pentium/Celeron300MHz or faster
RAM	256MB or more
Free hard disc space	25MB or more
OS	Recommend OS: Windows XP Home Edition / Professional SP1 or more * Confirmed languages: English, Japanese and German available. Other language is able to work in PC, but we don't confirm it. * "Windows Vista" and "Windows 7 (upper of Home Premium)" are able to update properly. * Window 2000 is impossible to use.
Display resolution	Super VGA (800x600) or more.
Port.	Serial COM port (D-Sub 9pin)
Communication speed	RS-232C:115,200bps

1.2 Preparation for the cables.

(1) Preparation for RS-232 cable

Serial Straight Cable for RS-232C consisting of D-Sub 9P(female) and D-Sub 9P(female) cable.
D-Sub 9P(male) and D-Sub 9P(male) Gender Changer.



D-Sub 9P(female) and D-Sub
9P(female) cable



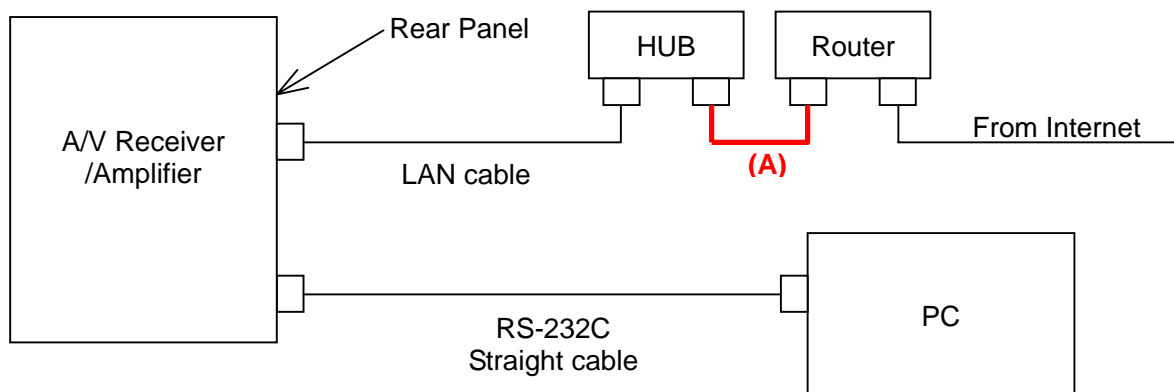
Gender Changer
D-Sub 9P(male) and D-Sub 9P(male)

Note: There is the RS-232C(Male and Female) 9P cable like the following picture on the market.
Then you don't need to use Gender Changer.



1.3 Connection of the A/V receiver/amplifier and PC

Connect the RS-232C cable between RS-232C port of PC and RS-232C port on the Rear panel of A/V Receiver/Amplifier.



1.4 Install the D&M Firmware Writer.

- 1) Please install "[DFW_0005_SR7005_\(Rev.1.0.13\).exe](#)" to any folder of your PC.
- 2) Please make shortcut icon on your PC.



[DFW_0005_SR7005_\(Rev.1.0.13\).exe](#)

2 Procedure of updating for firmware

2.1 Notice

Please keep the following notice for firmware update.

- a) Keep the PC environment refer to 1.1.
- b) Avoid the communication cable from the electrical noise source.
(E.g. telephone cable, AC line, a fluorescent light)
- c) Don't remove cable during update.
- d) Don't turn off the power during update.
- e) Don't run other PC application during update.
- f) Stop the resident program on PC.
- g) Stop the screen saver ability on PC.
- h) Stop the power save ability on PC.
- i) In case of laptop PC, Use the AC adaptor.

2.2 Procedure of updating for firmware

2.2.1 Please initialize the unit.

- 1) Turn on the power of unit while pressing the [SURROUND MODE] button and [AUTO] button simultaneously.
- 2) When FL Display will be indicated perfectly, please remove the [SURROUND MODE] button and [AUTO] button.

2.2.2 Please disconnect "A" Ethernet cable.

CAUTION!:

If you connect LAN cable (Ethernet connection) "A" to A/V receiver/amplifier, the "Ether image" firmware of A/V receiver/amplifier will be damaged.

2.2.3 Procedure of updating for firmware by "DFW (D&M Firmware Writer)"

After you update the firmware of unit via DPMS, please update the firmware of unit by DFW

CAUTION!:

When you use "Windows Vista" or "Windows 7", please set up the "Run this program in compatibility mode" of page 11~16 before updating.

2.2.4 Click the "shortcut icon" on your PC.



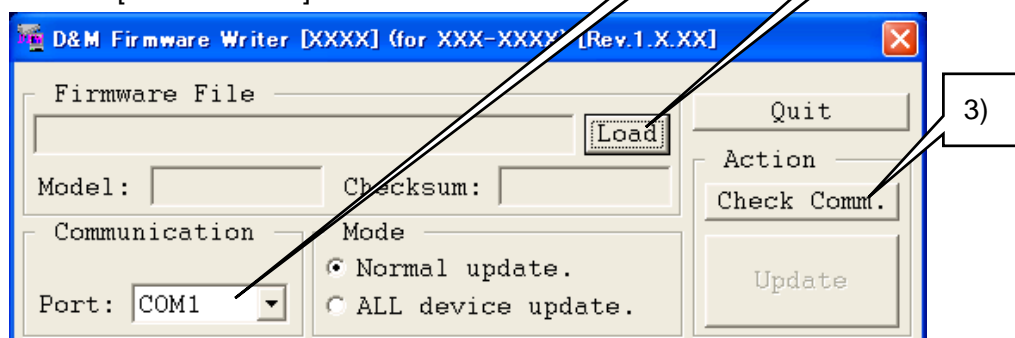
DFW_0005_SR7
005_(Rev.1.0.13)
.exe

2.3 Check the communication between A/V amplifier and PC.

1) Click the [Load] button, and select the "Update File".

2) Select the serial port number of RS-232C in PC.

3) Click the [Check Comm.] button.



4) If connection is good, "Communication checks OK." Message is indicated.



- 5) If connection is not good, "Communication check NG!" message is indicated.

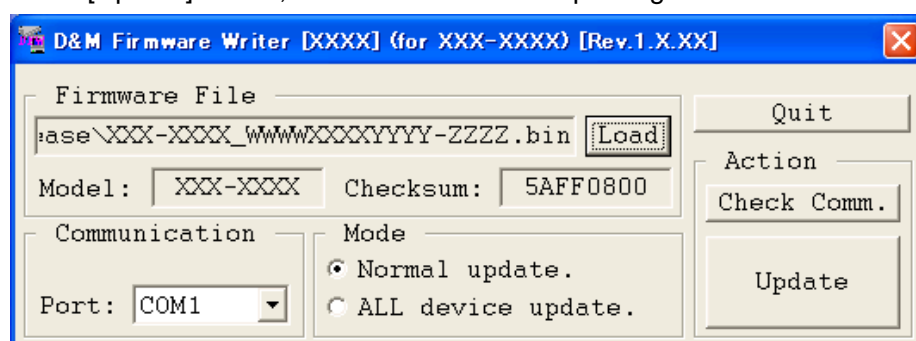


If above is indicated, please confirm the following items.

- a) Please confirm the connection of A/V amplifier and PC properly. (Refer to item1.3)
- b) Please confirm selection of RS-232C in PC correctly. (Refer to item 2.3-2))

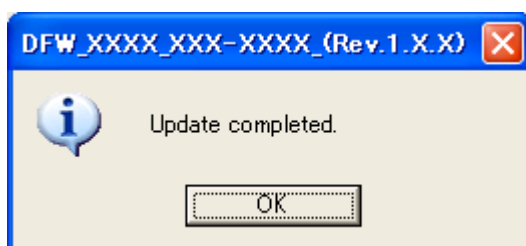
2.4 Start the firmware update

Click the [Update] button, then unit will be start updating the firmware.

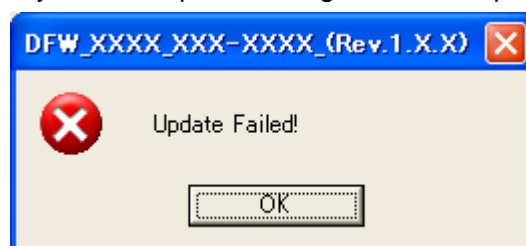


2.5 Complete the firmware update

- 2.5.1 When Update utility is completed to update the firmware, "Update completed." Message is indicated.



- 2.5.2 If you failed update during Main CPU update, then you need to use a specific update procedure.



2.6 Countermeasure:

2.6.1 Failure at DM860SBL

Please exchange the DM860 Unit, and update the firmware of unit from item 2.2

2.6.2 Failure at DM860IMG

- 1) Please connect AV amplifier to HUB with “A” Ethernet cable, and turns ON the power of unit.
- 2) Wait more than 10 minutes. DM860IMG firmware will be recovered by it self.
- 3) Pull out “A” Ethernet cable, and confirm version of the DM860IMG firmware.
- 4) Please update the firmware of unit from item 2.2 by DFW (D&M Firmware Writer).

2.6.3 Failure at other device

- 1) Turn off the AC power of unit.
- 2) Turn on the AC power of unit while pressing the **[SPKR A/B]** button and **[DSX]** button simultaneously. (Power LED lights red.)
- 3) Please update the firmware of unit from item 2.2 by DFW (D&M Firmware Writer).

3 Confirming the firmware's number after update:

After completion of the updating operation, the new version number can be confirmed by starting up amplifier according to the following procedure.

With the following operation, A/V receiver/ amplifier can be set to the Flash-ROM Version-Number Confirmation Mode.

Turn the power of A/V receiver/amplifier on, while holding both **“RETURN”** button and **“STATUS”** button on the front panel simultaneously.



Every time the “STATUS” Button is pressed, version numbers of the MAIN, SUB, etc. are indicated on the front panel section in the following order.

4 ERROR Message and countermeasure

4.1 Communication ERROR

Cause: No communication between A/V receiver/amplifier and PC.

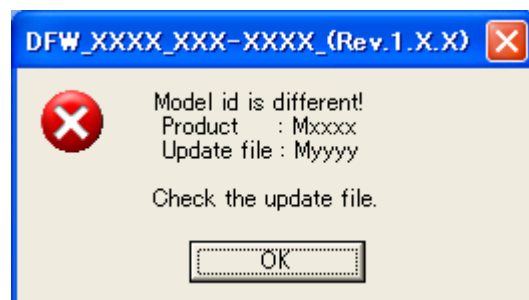
Countermeasure: Confirm RS-232C port number and Ethernet communication.



4.2 Difference of MODEL ID

Cause: Firmware is not correct.

Countermeasure: Please use and select proper firmware.



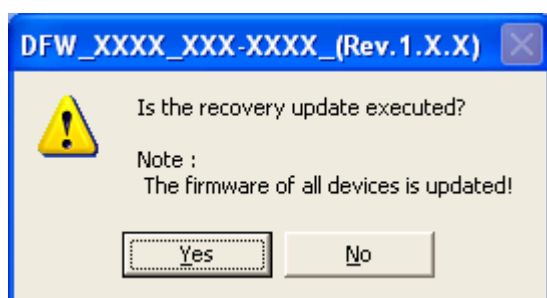
4.3 Message at Recovery mode

Cause: The unit is updated at RECOVERY mode.

Countermeasure:

When you want to update the unit at RECOVERY mode, press the "Yes" button.

When you do not update the unit at RECOVERY mode, press the "No" button.



Tip!:

When you choose "Yes" button, unit is updated all firmware of unit.

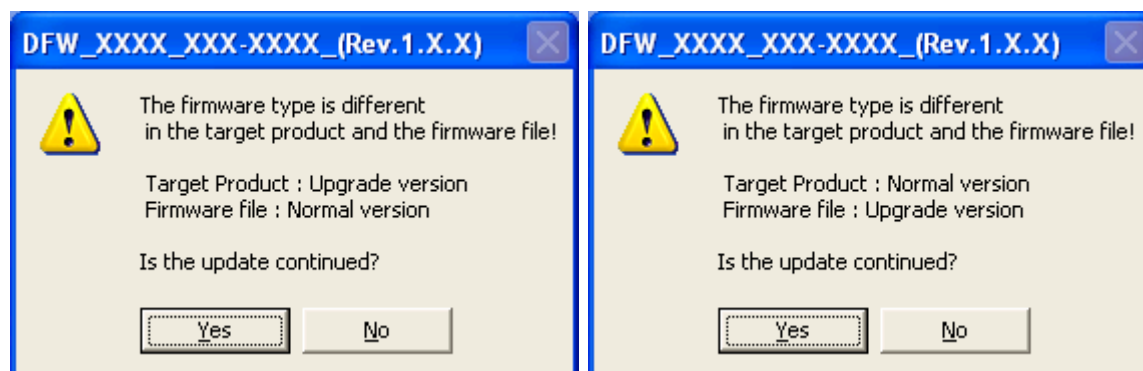
4.4 Message about between normal firmware and upgraded firmware

Cause: Inharmonious between normal firmware and upgraded firmware.

Countermeasure:

When you want to upgrade or downgrade the unit, press the “Yes” button.

When you do not upgrade or downgrade the unit, press the “No” button.



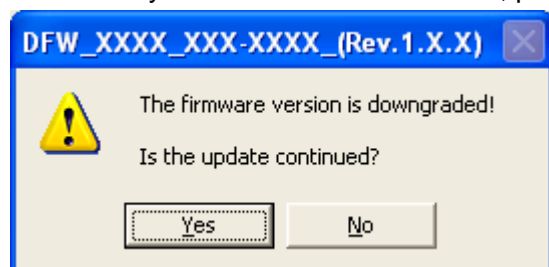
4.5 Confirmation of backdating

Cause: You would like to backdate the firmware of unit.

Countermeasure:

When you want to backdate the unit, press the “Yes” button.

When you do not backdate the unit, press the “No” button.



4.6 Selection of “Update Notification” indicator at backdating

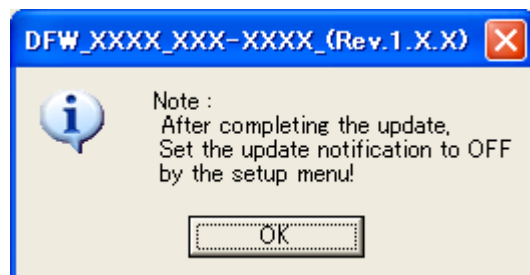
Cause: You press the “yes” button at above item 4.5.

Countermeasure: Please turn off the “Update Notification” message by Instruction Manual.

When you backdate the firmware of unit, “Update Notification” indicator will be indicated.

Then customers update the firmware of unit via DPMS.

The firmware of unit will be backdated.



4.7 There is no firmware update.

Cause: Same version of firmware, unit and trying to write.

Countermeasure: If you want to rewrite, please rewrite in ALL device update mode or RECOVERY mode.



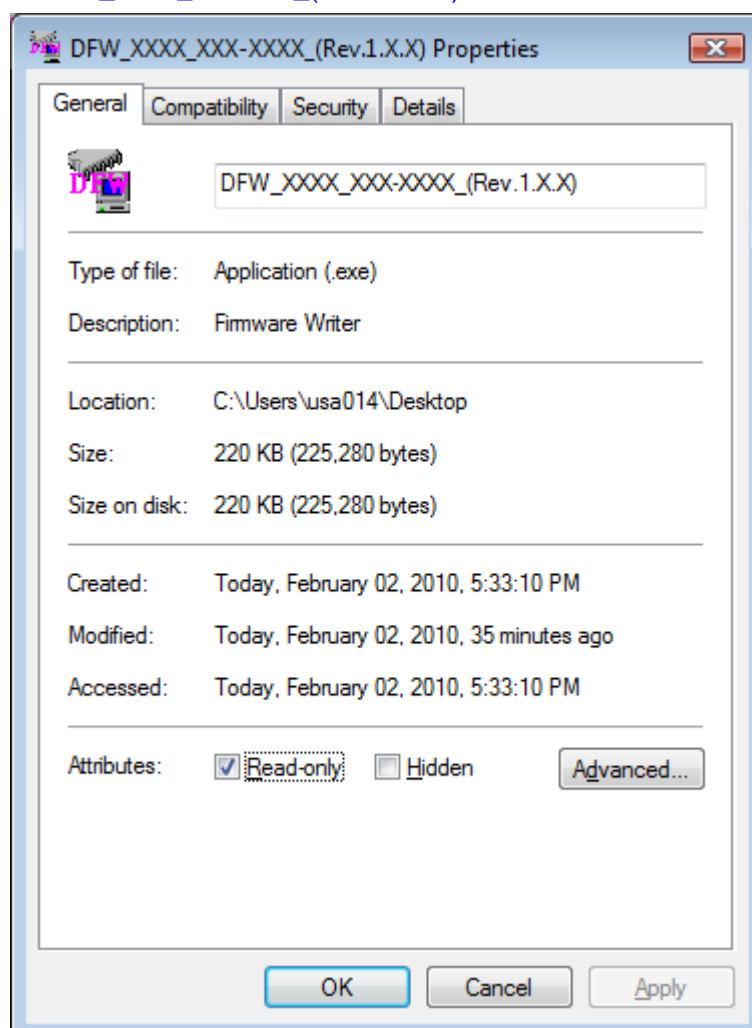
5 Setting of "Run this program in compatibility mode" for **Windows Vista**

5.1.1 Click the short cut of "DFW_0005_SR7005_(Rev.1.0.13).exe" by right button of Mouse.

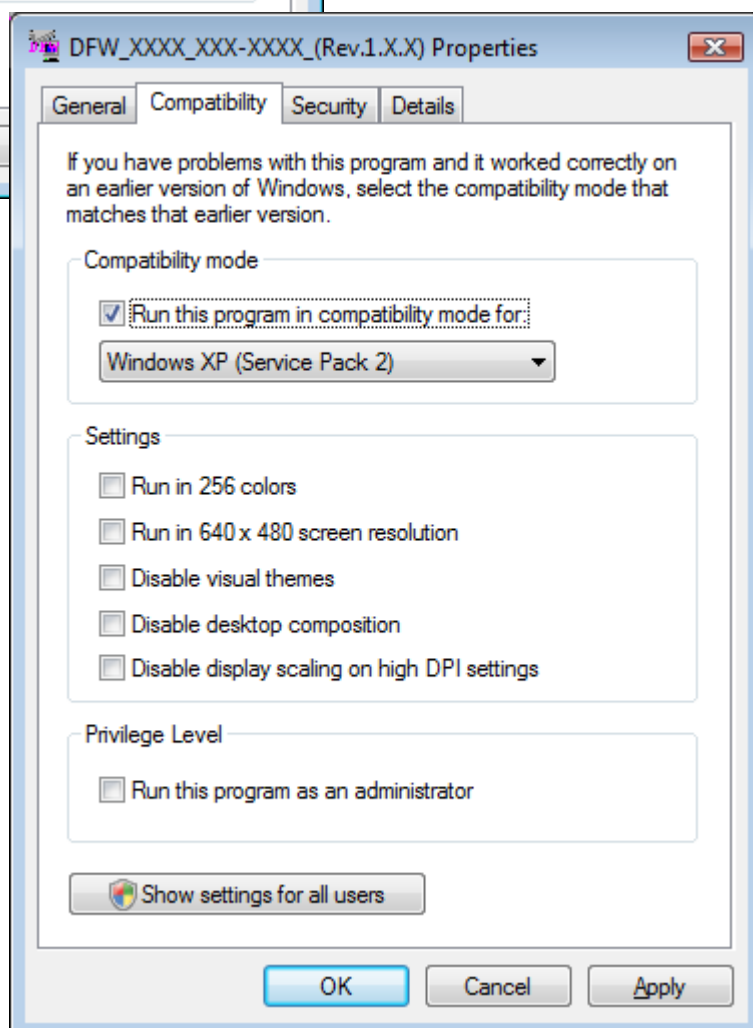
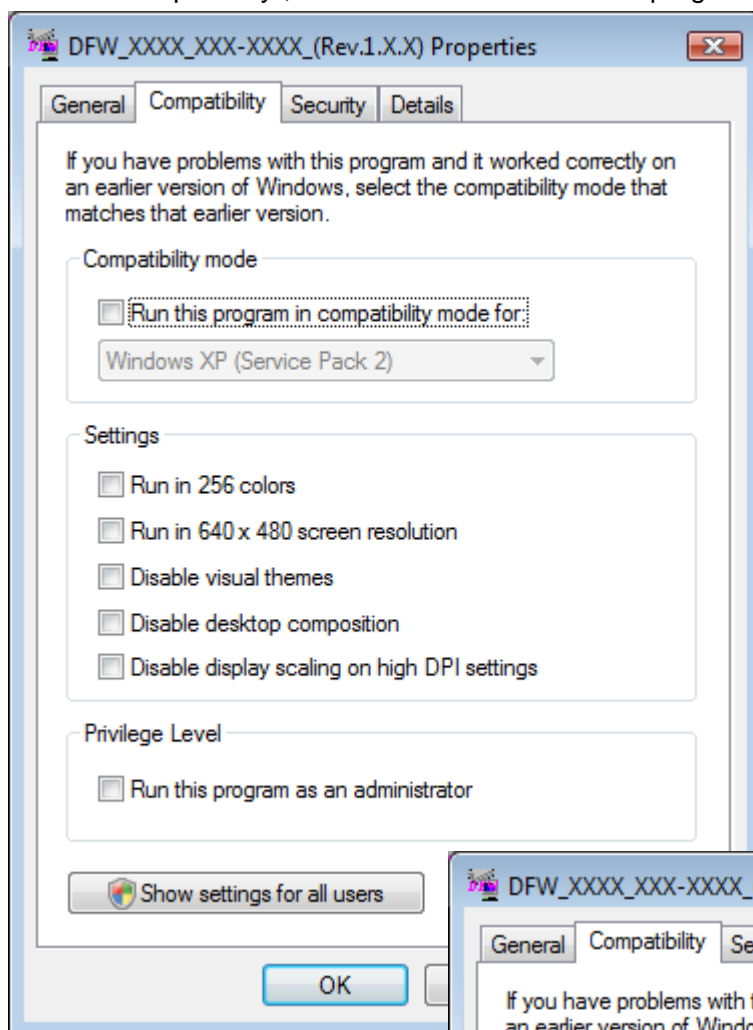


DFW_0005_SR7
005_(Rev.1.0.13)
.exe

The property of "DFW_0005_SR7005_(Rev.1.0.13).exe" will be indicated.

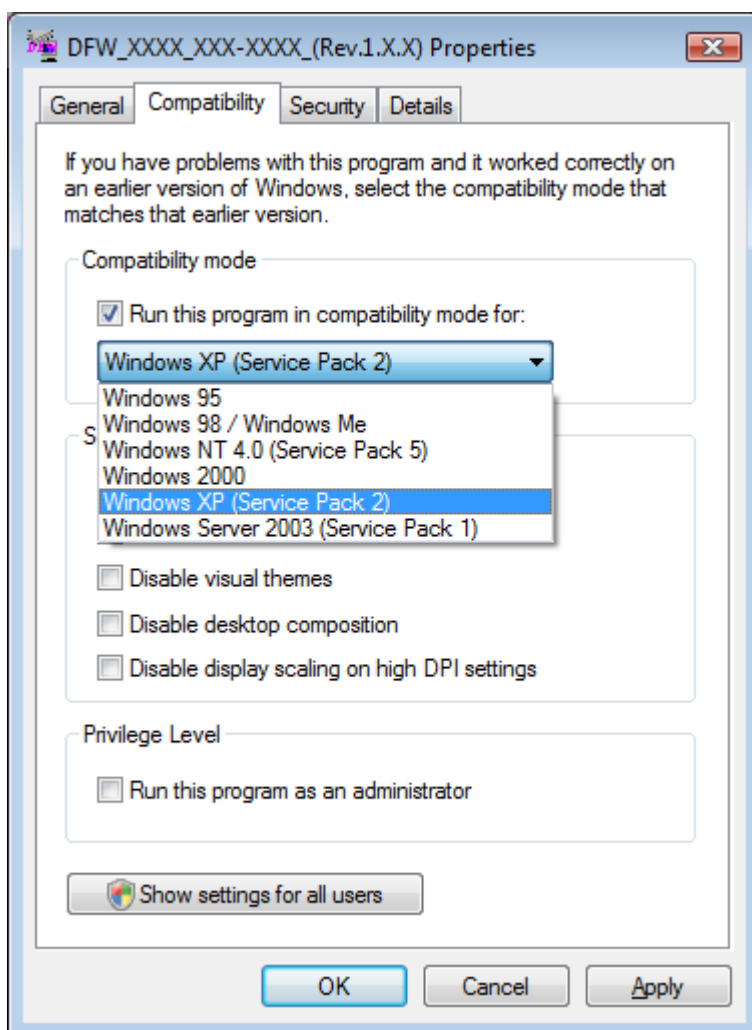


Click the tab of "Compatibility", and click the of "Run this program in compatibility mode for".



5.1.2 Select the “Windows XP (Service Pack2)”, and click the “OK” button.

Don't select “Windows Vista” or “Windows 7” or others!



5.1.3 Go to item 2.2.4.

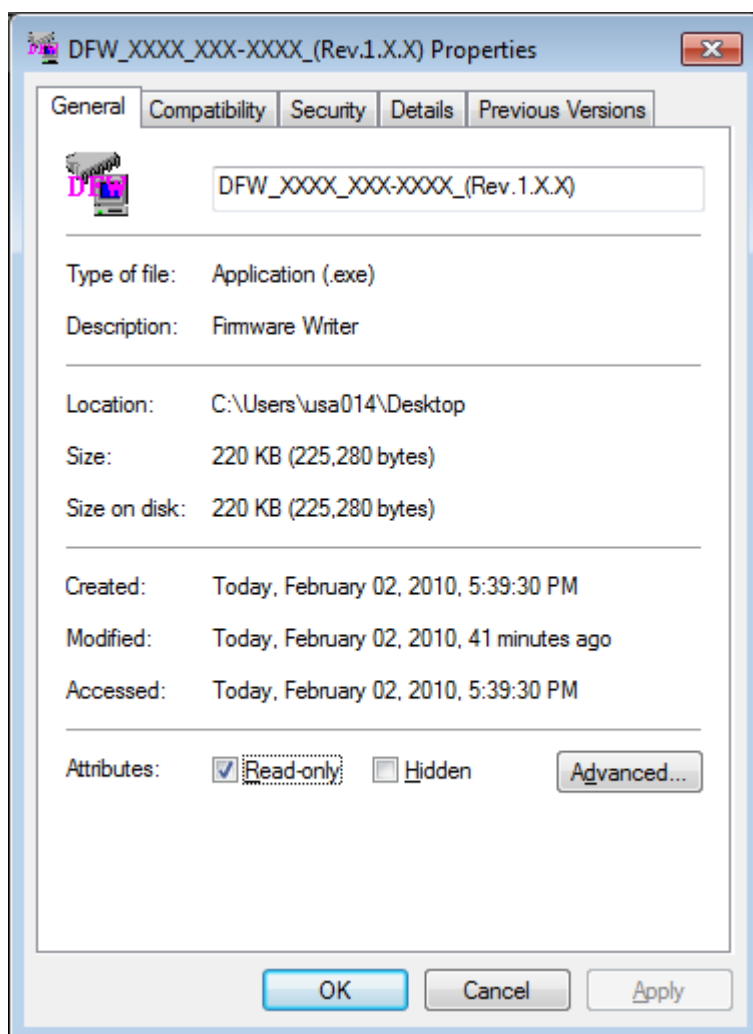
6 Setting of “Run this program in compatibility mode” for **Windows 7**

6.1.1 Click the short cut of “DFW_0005_SR7005_(Rev.1.0.13).exe” by right button of Mouse.

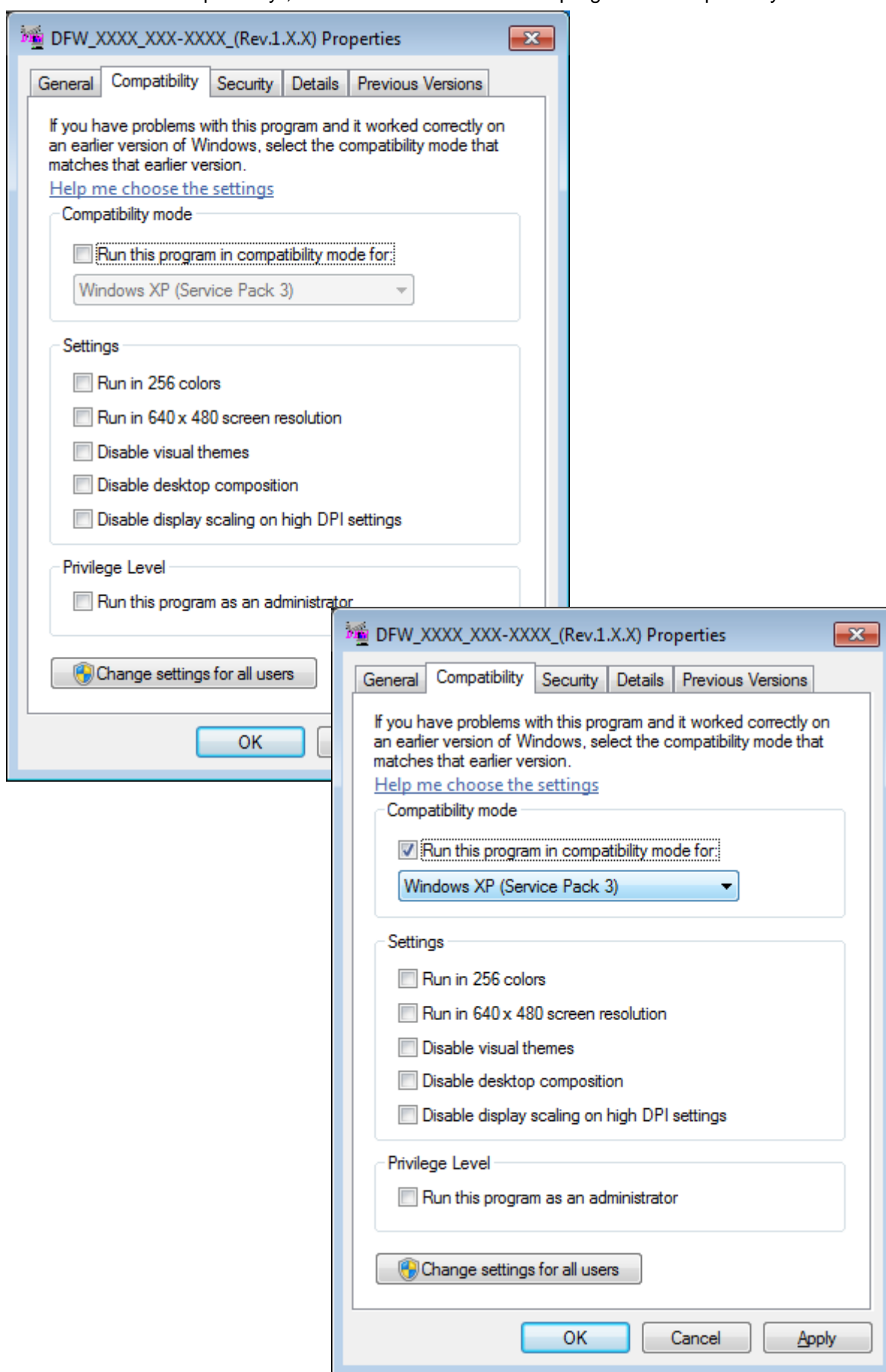


DFW_0005_SR7
005_(Rev.1.0.13)
.exe

6.1.2 The property of “DFW_0005_SR7005_(Rev.1.0.13).exe” will be indicated.

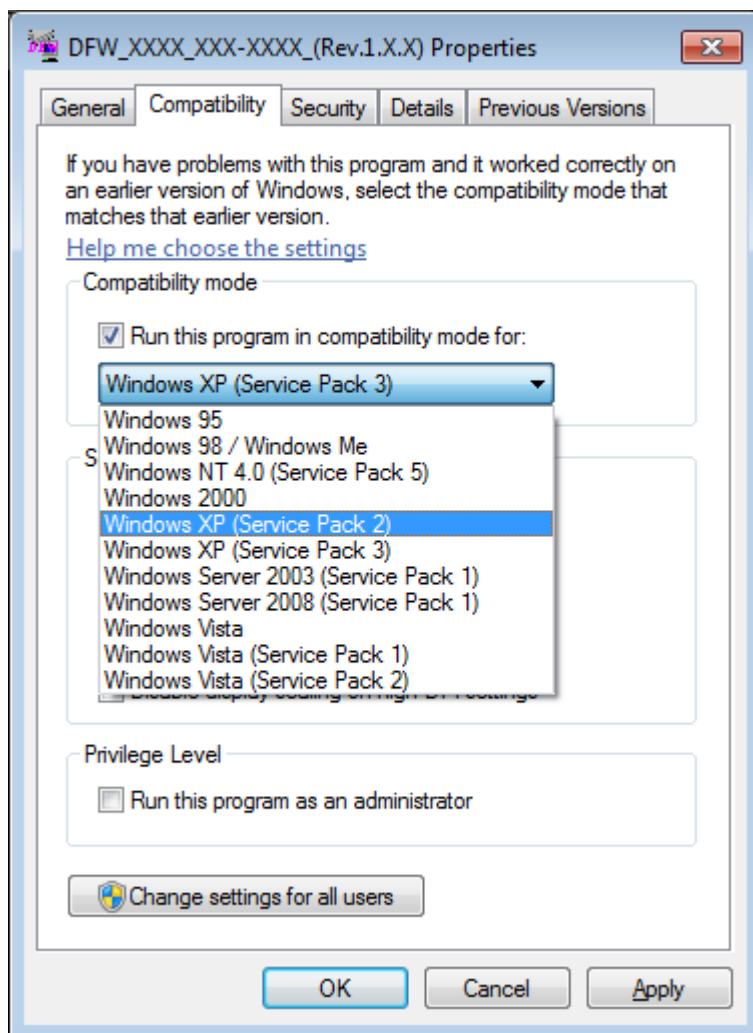


6.1.3 Click the tab of "Compatibility", and click the of "Run this program in compatibility mode for".



6.1.4 Select the “Windows XP (Service Pack2)”, and click the “OK” button.

Don't select “Windows Vista” or “Windows 7” or others!



6.1.5 Go to item 2.2.4.