



## **Service Bulletin**

**No. :** MZ08-023

**Date:** June 30, 2008

---

**Model:** SR7002, SR8002

**Subject:** Software Update Information

\* This Service Bulletin is for units with the following minor problem. It only needs to be applied upon customer claim.

**Symptom:**

1. The SW LEVEL drops when the ACCOUSTIC EQ MODE is switched ON.
2. When the product is playing back Dolby TrueHD/dts-HD Master Audio, the audio becomes choppy or noisy at intervals of a few minutes to more. (This problem occurs only when the product is connected to a Blu-ray/HD DVD Player via HDMI, with the player outputting TrueHD/Master Audio Bitstream and the TrueHD/Master Audio decoded in the SR; it never occurs when the audio is decoded in the Player and sent via HDMI in multichannel PCM. It never occurs to the Dolby Digital Plus/dts-HD High Resolution Audio.)
3. When the audio signal is changed from Analog Component (720p, 1080i) to HDMI, vertical fringes appear on the left side of the TV screen.
4. When the audio signal is changed from Analog Component (480p) to HDMI, vertical fringes appear on the left side of the TV screen.

**Solution:**

1. Modify the MAIN software. (Use the electronic volume and perform the 9dB OFFSET.)
2. Modify the MAIN software. (Change the clock recovery method at the time of playing back Dolby TrueHD/dts-Master Audio.)
3. a) Modify the MAIN / HDMI software. (Change the digital video sync output from the Embedded type to the Separate type.)  
b) Add a shield wire to the two points where the pattern has been cut on POS. NO. 56 HDMI PWB. For details, refer to 3/5 to 5/5.

---

### **CONFIDENTIALITY NOTICE:**

The information contained in this document is intended for the exclusive use by MARANTZ Authorized Service Centers and their employees. This document may contain information that is privileged, confidential and may be protected from disclosure under applicable laws and terms of the MARANTZ Service Agreement. Any distribution, disclosure, dissemination or copying of this document and the information it contains is prohibited. No responsibility will be accepted by MARANTZ for any damage, injury or loss resulting from the misuse of the information contained in this document.

4. Modify the MAIN / HDMI software. (Change the digital video sync output from the Embedded type to the separate type at the time of 480p too.)

### Parts:

1. The following is the update software for the MAIN/HDMI microprocessor for each of 1, 2, 3 and 4.

### Update software and Part no.

1) Firmware – Main: **SR8002Main\_080313\_1.mot**

Part No: **00M36CW499A06** (For how to rewrite, see the Service Manual on Page 21.)

2) Firmware – HDMI: **HDMI\_REPV3x080313h35.mot**

Part No: **00M36CW499B04** (For how to rewrite, see the Service Manual on Page 31.)

Service Code	Ref No	Date	MAIN	HDMI
MZ06	MZ08-023	2008, 4, 11	V080313	h35
MZ05	-	-	V080307	h34

2. Shield Wire (1 set)

Part No: **90M-YB001940R**

---

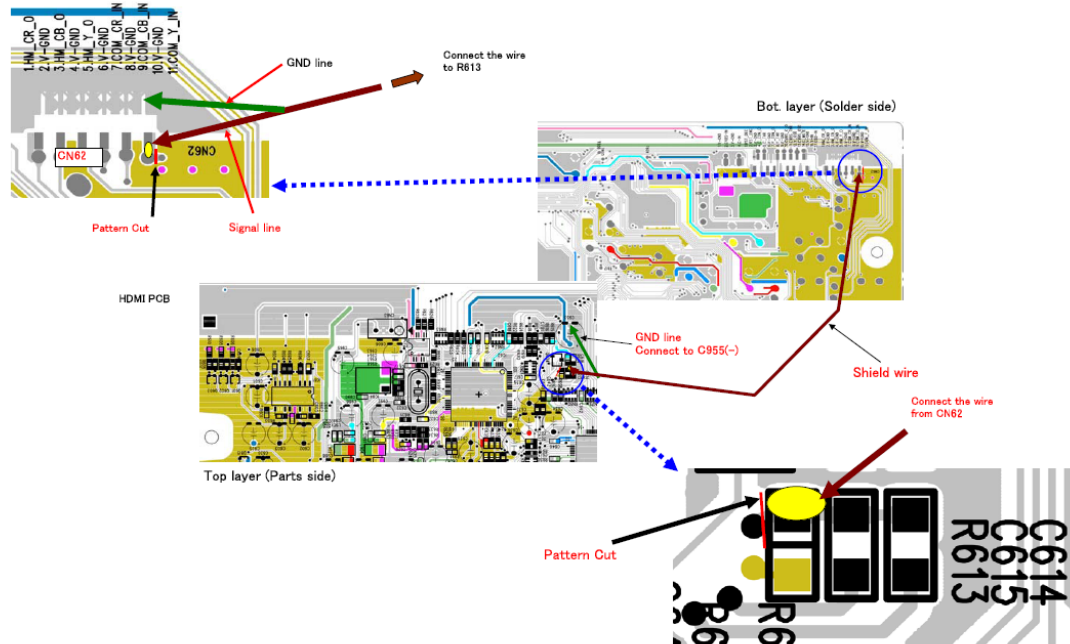
### CONFIDENTIALITY NOTICE:

The information contained in this document is intended for the exclusive use by MARANTZ Authorized Service Centers and their employees. This document may contain information that is privileged, confidential and may be protected from disclosure under applicable laws and terms of the MARANTZ Service Agreement. Any distribution, disclosure, dissemination or copying of this document and the information it contains is prohibited. No responsibility will be accepted by MARANTZ for any damage, injury or loss resulting from the misuse of the information contained in this document.

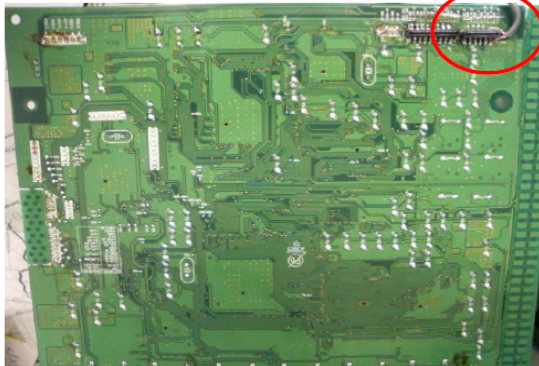
Add a shield wire to the two points where the pattern has been cut on POS. NO. 56 HDMI PWB.

1. It is connected by a shield wire from CN62 to R613 then bond to the PWB.

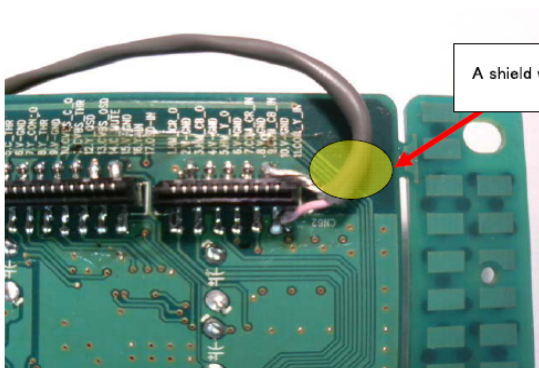
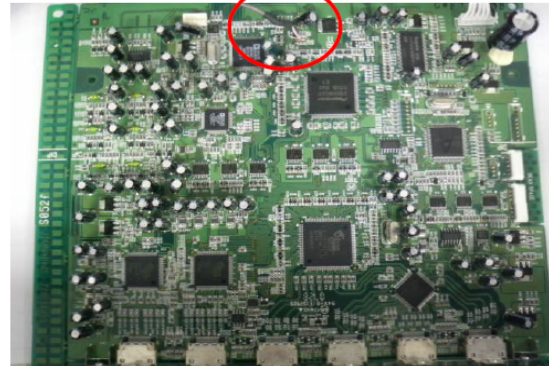
BOND: SONY Chemical SC608LVZ Sony Chemical Corp. Self-extinguishing adhesive) or the equivalent.  
2. points of pattern out.



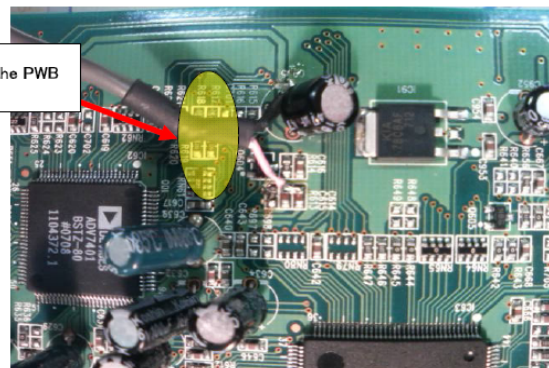
Bot. layer (Solder side)



Top layer (Parts side)

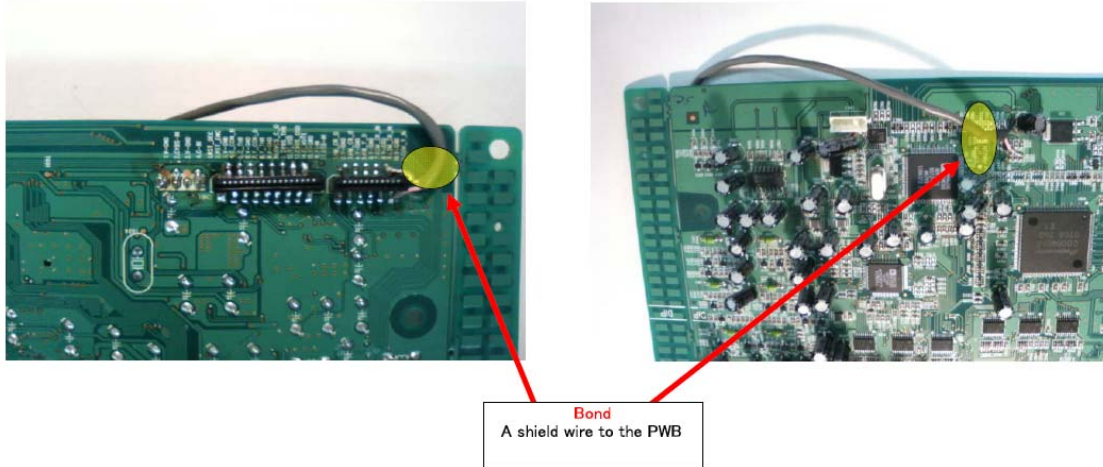


**Bond**  
A shield wire to the PWB



### CONFIDENTIALITY NOTICE:

The information contained in this document is intended for the exclusive use by MARANTZ Authorized Service Centers and their employees. This document may contain information that is privileged, confidential and may be protected from disclosure under applicable laws and terms of the MARANTZ Service Agreement. Any distribution, disclosure, dissemination or copying of this document and the information it contains is prohibited. No responsibility will be accepted by MARANTZ for any damage, injury or loss resulting from the misuse of the information contained in this document.



## Serial Number Range:

Model	Solution number and Service Code				
	1	2	3_1)	3_2)	4
SR7002	~MZ04	~MZ04	~MZ04	~MZ02	~MZ05
SR8002	~MZ04	~MZ04	~MZ04	~MZ02	~MZ05

[Service Codes for products corrected during production]

Model	Solution number and Service Code				
	1	2	3_1)	3_2)	4
SR7002	MZ05~	MZ05~	MZ05~	MZ03~	MZ06~
SR8002	MZ05~	MZ05~	MZ05~	MZ03~	MZ06~

### CONFIDENTIALITY NOTICE:

The information contained in this document is intended for the exclusive use by MARANTZ Authorized Service Centers and their employees. This document may contain information that is privileged, confidential and may be protected from disclosure under applicable laws and terms of the MARANTZ Service Agreement. Any distribution, disclosure, dissemination or copying of this document and the information it contains is prohibited. No responsibility will be accepted by MARANTZ for any damage, injury or loss resulting from the misuse of the information contained in this document.