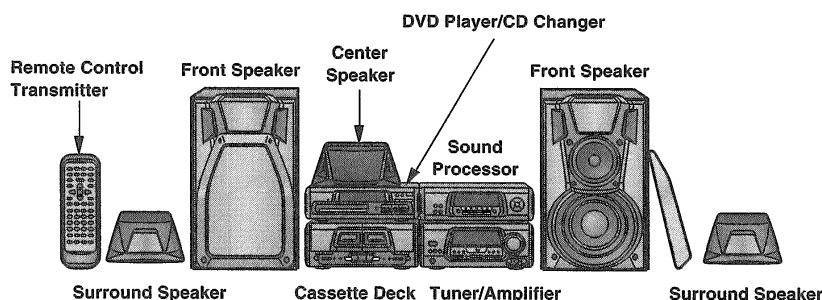


Service Manual

Stereo Cassette Deck

 Cassette Deck
RS-EH1000

 Colour
 (S) Silver Type.

 Area
 (GK) China.

System	SC-VC1000	SC-VC988	SC-VC978
Sound Processor	SH-EH1000	SH-EH1000	SH-EH502
Tuner / Amplifier	SA-EH1000	SA-EH602	SA-EH502
DVD Player	SL-EH1000	—	—
CD Changer	—	SL-EH602	SL-EH602
Cassette Deck	RS-EH1000	RS-EH1000	RS-EH1000
Front Speakers*2	SB-VC1000	SB-VC1000	SB-VC1000
Center Speaker*2	SB-PC600X	SB-PC600X	SB-PC55
Surround Speakers*2	SB-PS600X	SB-PS600X	SB-PS55

Please file and use this manual together with the service manual for Model No. RS-EH600, Order No. AD9712165C3.

Note : • This simplified service manual is provided to indicate the differences between the original model No. RS-EH600 (GK)(GCS) and the subsequent model No. RS-EH1000 (GK).

Because of unique interconnecting cables, when a component requires service, send or bring in the entire system.

Tape Deck : AR-2 Mechanism Series

Specifications

Deck system :	Stereo cassette deck
Track system :	4 track, 2 channels
Recording system :	AC bias
Bias frequency ;	100 kHz
Erasing system :	AC erase
Heads :	
DECK 1 (Playback head) ;	Permalloy head
DECK 2 (Recording/Playback head) ;	Permalloy head
(Erasing head) ;	Double gap ferrite head
Motors :	
DECK 1, 2 Capstan drive ;	DC servo motor
Tape speed :	4.8 cm/sec.
Wow and flutter :	0.16 % (WRMS)
Fast forward and rewind times :	Approx. 110 seconds with C-60 cassette tape
Frequency response (Dolby NR off) :	
TYPE I (NORMAL) ;	20 Hz – 16 kHz (DIN)
TYPE II (HIGH) ;	20 Hz – 16 kHz (DIN)
TYPE IV (METAL) ;	20 Hz – 16 kHz (DIN)

S/N (Signal level = max recording level, TYPE II type tape) :	
NR off ;	56 dB (A weighted)
Dolby B NR on ;	66 dB (A weighted)
Input sensitivity and impedance :	
REC (IN) ;	400 mV/23 kΩ
Output voltage and impedance :	
PLAY (OUT) ;	280 mV/360 Ω
Dimensions :	287 (W) × 118.5 (H) × 277 (D) mm
Weight :	2.0 kg

Notes : Specifications are subject to change without notice.
Weight and dimensions are approximate.

- *1 : Dolby noise reduction manufactured under license from Dolby Laboratories Licensing Corporation.
"Dolby" and the double-D symbol are trade marks of Dolby Laboratories Licensing Corporation.
- *2 : Made in Singapore

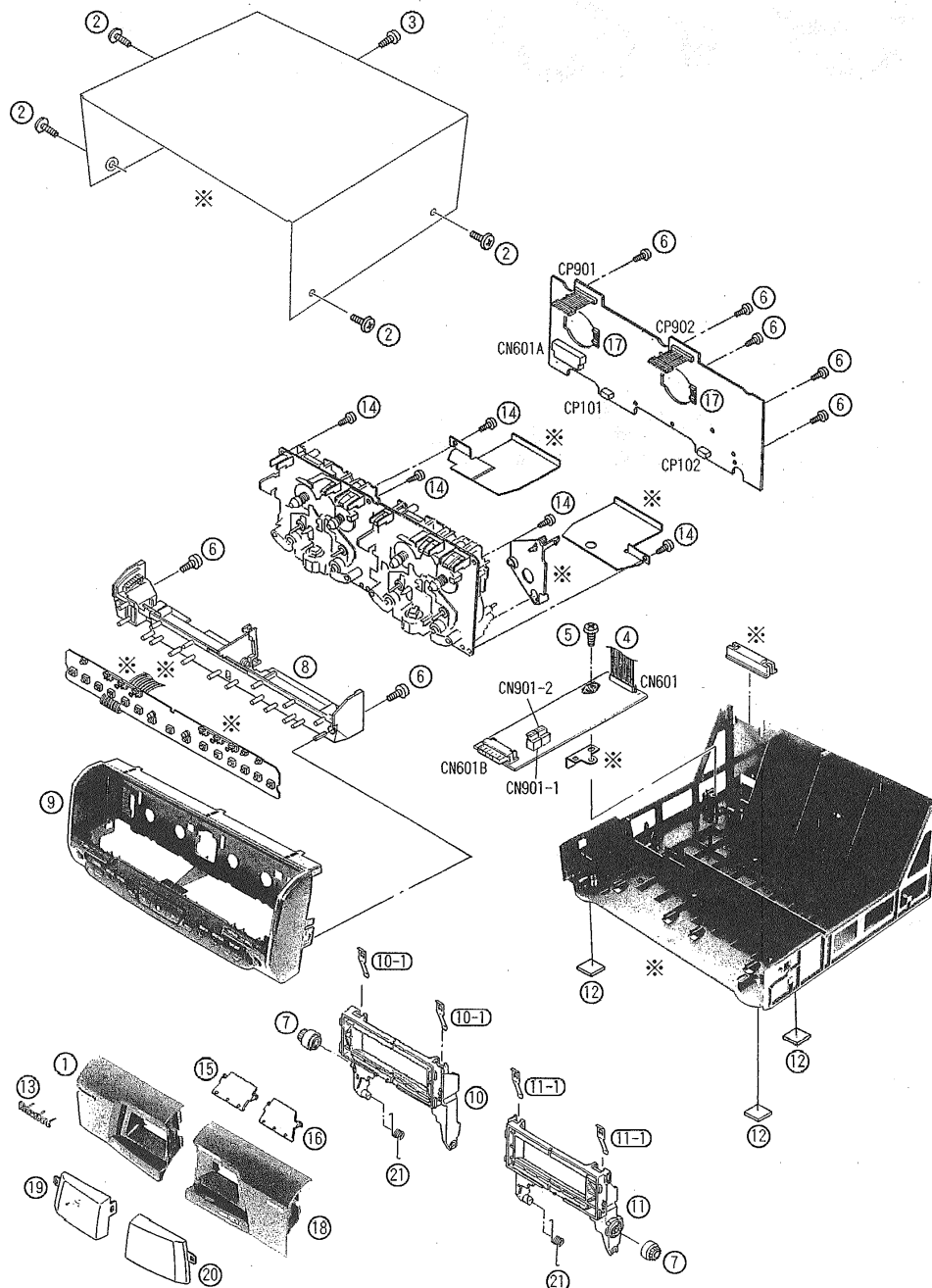
⚠ WARNING

This service information is designed for experienced repair technicians only and is not designed for use by the general public. It does not contain warnings or cautions to advise non-technical individuals of potential dangers in attempting to service a product. Products powered by electricity should be serviced or repaired only by experienced professional technicians. Any attempt to service or repair the product or products dealt with in this service information by anyone else could result in serious injury or death.

Panasonic®

© 1998 Matsushita Electric Industrial Co., Ltd.
All rights reserved. Unauthorized copying and distribution is a violation of law.

■ Cabinet Parts Locations



We do not supply those items of parts marked *.

■ Replacement Parts List

Ref.No.	Part No.	Part Name & Description	Pcs	Remarks
1	RKF0506C-S	CASSETTE PANEL(DECK 1)	1	
2	RHD30007-K1	SCREW	4	
3	XTBS3+10JFZ1	SCREW	1	
4	REX0851	WIRE ASS'Y	1	
5	XTBS3+8JFZ1	SCREW	1	
6	XTBS26+8J	SCREW	7	
7	RDG0129-1	GEAR	2	
8	RMQ0577A-2	FRAME	1	
9	RFKGSEH1000G	FRONT PANEL ASS'Y	1	
10	RFKLSEH600GB	CASSETTE HOLDER(DECK 1)	1	
10-1	RUS757ZA	SPRING	2	
11	RFKLACH430GB	CASSETTE HOLDER(DECK 2)	1	

Ref.No.	Part No.	Part Name & Description	Pcs	Remarks
11-1	RUS757ZA	SPRING	2	
12	SHG1654	RUBBER	3	
13	RGB0022-A	PANASONIC BADGE	1	
14	XTB3+10JFZ	SCREW	5	
15	RGL0349-Q	LENS 1	1	
16	RGL0350-Q	LENS 2	1	
17	RJR0113	CONNECTOR	2	
18	RKF0507-S	CASSETTE PANEL(DECK 2)	1	
19	RKW0489A-Q	WINDOW 1	1	
20	RKW0490A-Q	WINDOW 2	1	
21	RMB0474	SPRING	2	