

Pioneer

Service Manual

ORDER NO.
RRV4320

AV Receiver

VSX-1122-K

VSX-922-K

THIS MANUAL IS APPLICABLE TO THE FOLLOWING MODEL(S) AND TYPE(S).

Model	Type	Power Requirement	Remarks
VSX-1122-K	DLPWXE	AC 110 V to 127 V/220 V to 240 V	
VSX-1122-K	AXE5	AC 220 V	
VSX-922-K	FXE	AC 110 V	
VSX-922-K	PWXE	AC 220 V to 240 V	
VSX-922-K	DLXE	AC 220 V to 240 V	
VSX-922-K	AXE5	AC 220 V	

This service manual should be used together with the following manual(s).

Model No.	Order No.	Remarks
VSX-1127-K/CUXE	RRV4307	

For SPECIFICATIONS and PANEL FACILITIES, refer to the operating instructions.

1. CONTRAST OF MISCELLANEOUS PARTS

NOTES: ● Parts marked by "NSP" are generally unavailable because they are not in our Master Spare Parts List.

● The Δ mark found on some component parts indicates the importance of the safety factor of the part.

Therefore, when replacing, be sure to use parts of identical designation.

● Screws adjacent to ∇ mark on product are used for disassembly.

● For the applying amount of lubricants or glue, follow the instructions in this manual.

(In the case of no amount instructions, apply as you think it appropriate.)

● Nos. indicate the pages and Nos. in the service manual for the base model.

● When ordering resistors, first convert resistance values into code form as shown in the following examples.

Ex.1 When there are 2 effective digits (any digit apart from 0), such as 560 ohm and 47k ohm (tolerance is shown by J=5%, and K=10%).

560 Ω \rightarrow 56 x 10¹ \rightarrow 561 RD1/4PU5 6 1 J
 47k Ω \rightarrow 47 x 10³ \rightarrow 473 RD1/4PU4 7 3 J
 0.5 Ω \rightarrow R50 RN2HR 5 0 K
 1 Ω \rightarrow 1R0 RS1P 1 R 0 K

Ex.2 When there are 3 effective digits (such as in high precision metal film resistors).

5.62k Ω \rightarrow 562 x 10¹ \rightarrow 5621 RN1/4PC 5 6 2 1 F

CONTRAST TABLE

VSX-1122-K/DLPWXE and VSX-1122-K/AXE5

VSX-1127-K/CUXE, VSX-1122-K/DLPWXE and VSX-1122-K/AXE5 are constructed the same except for the following:

Mark	No.	Symbol and Description	VSX-1127-K /CUXE	VSX-1122-K /DLPWXE	VSX-1122-K /AXE5	Remarks
PCB ASSEMBLIES						
NSP	P60-1 P60-2 P60-4	1..PCB TTL ASSY MAIN 2..MAIN Assy 2..VIDEO Assy 2..G-R Assy	7025HK1110020-IL 7028071711010-IL 7028071712020-IL 7028071714040-IL	7025HK1110060-IL 7028071711030-IL 7028071712050-IL 7028071714020-IL	7025HK1110070-IL 7028071711090-IL 7028071712050-IL 7028071714020-IL	
NSP	P60-7	1..PCB TTL ASSY DMAIN 2..D-MAIN Assy	7025HK1110021-IL 7028071752020-IL	7025HK1110061-IL 7028071752050-IL	7025HK1110071-IL 7028071752050-IL	
NSP	P60-8 P60-11 P60-12	1..PCB TTL ASSY FRONT 2..FRONT Assy 2..FVIDEO ASSY 2..HP ASSY 2..GUIDE ASSY	7025HK1110022-IL 7028071721050-IL 7028071724040-IL 7028071725040-IL Not used	7025HK1110062-IL 7028071721030-IL 7028071724020-IL 7028071725020-IL 7028071726020-IL	7025HK1110072-IL 70280717210D0-IL 7028071724020-IL 7028071725020-IL 7028071726020-IL	No. 65
NSP	P60-13	1..PCB TTL ASSY AUDIO 2..AUDIO Assy	7025HK1110023-IL 7028071741050-IL	7025HK1110063-IL 7028071741030-IL	7025HK1110073-IL 7028071741030-IL	
NSP	P60-16 P60-15	1..PCB TTL ASSY IR 2..BRG Assy 2..SMPS Assy	7025HK1110024-IL 7028071773040-IL 7028071772010-IL	7025HK1110064-IL 7028071773020-IL 7028071772020-IL	7025HK1110074-IL 7028071773020-IL 70280717720C0-IL	
NSP	P60-19	1..PCB TTL ASSY AMP7 2..AMP7 Assy	7025HK1110025-IL 7028071731040-IL	7025HK1110065-IL 7028071731020-IL	7025HK1110075-IL 7028071731020-IL	
NSP	P60-20	1..PCB TTL ASSY FHDMI 2..FHDMI Assy	7025HK1110026-IL 7028071791040-IL	7025HK1110066-IL 7028071791050-IL	7025HK1110076-IL 7028071791050-IL	
NSP	P60-21	1..PCB TTL ASSY F-USB 2..F-USB Assy	7025HK1110027-IL 7028071761020-IL	7025HK1110067-IL 7028071781070-IL	7025HK1110077-IL 7028071781070-IL	
NSP		1..PCB TTL ASSY BT	7025HK1110028-IL	7025HK1110068-IL	7025HK1110078-IL	
PACKING SECTION						
Δ	P57-1 P57-7	AC Power Cord Operating Instructions (CD-ROM) Operating Instructions (En)(PDF) Operating Instructions (Es)(PDF) Operating Instructions (Zhcn)(PDF)	Not used 6517000000550-IL ARB7478 Not used Not used	L068250160020-IL 6517000000600-IL ARB7476 ARC8063 Not used	Not used 6517000000610-IL Not used Not used ARC8067	
	P57-8 P57-9	Quick Start Guide Box, Gift	5707000006590-IL 6007211820110-IL	5707000006640-IL 6007211820140-IL	5707000006650-IL 60072118201C0-IL	

Mark	No.	Symbol and Description	VSX-1127-K /CUXE	VSX-1122-K /DLPWXE	VSX-1122-K /AXE5	Remarks
NSP	P57-12	Warranty Sheet Poly Bag	ARY7156 Not used	Not used 6330000240000-IL	ARY7137 Not used	AC Power Cord
		EXTERIOR SECTION				
	P60-23	Cord Assy	L068125101710-IL	Not used	L068250101710-IL	
	P60-24	Socket,Power AC	Not used	G430040560021-IL	Not used	
	P60-25	Power Trans 1021U	8200960611050-IL	8200960611060-IL	8200960611040-IL	
	P60-35	Front Panel	3067215111020-IL	3067215111130-IL	3067215111130-IL	
	P60-36	Back Chassis	3207214216200S-IL	3207214216110-IL	3207214216210-IL	
	P60-37	Foot	4000210391000-IL	4007210391000-IL	4007210391000-IL	
	P60-46	Window Lower	5077213123090-IL	50772131230A0-IL	50772131230A0-IL	
	P60-64	Screw Stopper	Not used 4380040162010-IL	CBZ30P080FTB Not used	Not used 4380040162010-IL	No. 66

Notes : The numbers in the remarks column correspond to the numbers on the "EXPLODED VIEWS".
For PCB ASSEMBLIES, Refer to "CONTRAST OF PCB ASSEMBLIES".

VSX-922-K/FXE, VSX-922-K/PWXE, VSX-922-K/DLXE and VSX-922-K/AXE5

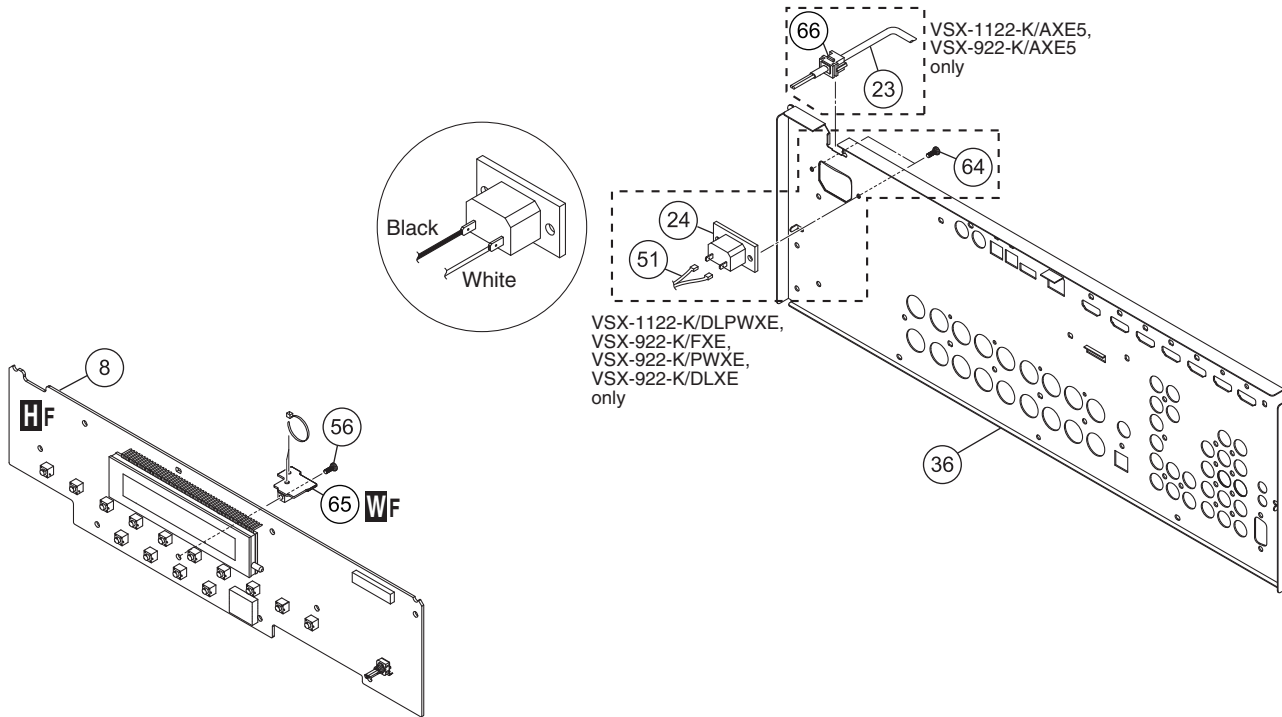
VSX-1127-K/CUXE, VSX-922-K/FXE, VSX-922-K/PWXE, VSX-922-K/DLXE and VSX-922-K/AXE5 are constructed the same except for the following:

Mark	No.	Symbol and Description	VSX-1127-K /CUXE	VSX-922-K /FXE	VSX-922-K /PWXE	VSX-922-K /DLXE	VSX-922-K /AXE5	Remarks
NSP		PCB ASSEMBLIES						
		1..PCB TTL ASSY MAIN	7025HK1110020-IL	7025HK1109040-IL	7025HK1109050-IL	7025HK1109060-IL	7025HK1109070-IL	
	P60-1	2..MAIN Assy	7028071711010-IL	7028071711090-IL	7028071711090-IL	7028071711030-IL	7028071711090-IL	
	P60-2	2..VIDEO Assy	7028071712020-IL	7028071712060-IL	7028071712060-IL	7028071712060-IL	7028071712060-IL	
NSP		1..PCB TTL ASSY DMAIN	7025HK1110021-IL	7025HK1109041-IL	7025HK1109051-IL	7025HK1109061-IL	7025HK1109071-IL	
	P60-7	2..D-MAIN Assy	7028071752020-IL	7028071752060-IL	7028071752060-IL	7028071752060-IL	7028071752060-IL	
NSP		1..PCB TTL ASSY FRONT	7025HK1110022-IL	7025HK1109042-IL	7025HK1109052-IL	7025HK1109062-IL	7025HK1109072-IL	
	P60-8	2..FRONT Assy	7028071721050-IL	7028071721090-IL	70280717210A0-IL	70280717210B0-IL	70280717210C0-IL	
	P60-11	2..FVIDEO ASSY	7028071724040-IL	7028071724020-IL	7028071724020-IL	7028071724020-IL	7028071724020-IL	
	P60-12	2..HP ASSY 2..GUIDE ASSY	7028071725040-IL Not used	7028071725020-IL 7028071726020-IL	7028071725020-IL 7028071726020-IL	7028071725020-IL 7028071726020-IL	7028071725020-IL 7028071726020-IL	No. 65
NSP		1..PCB TTL ASSY AUDIO	7025HK1110023-IL	7025HK1109043-IL	7025HK1109053-IL	7025HK1109063-IL	7025HK1109073-IL	
	P60-13	2..AUDIO Assy	7028071741050-IL	7028071741080-IL	7028071741080-IL	7028071741080-IL	7028071741080-IL	
NSP		1..PCB TTL ASSY IR	7025HK1110024-IL	7025HK1109044-IL	7025HK1109054-IL	7025HK1109064-IL	7025HK1109074-IL	
	P60-15	2..SMPS Assy	7028071772010-IL	7028071772090-IL	7028071772020-IL	7028071772020-IL	70280717720C0-IL	
	P60-16	2..BRG Assy	7028071773040-IL	7028071773050-IL	7028071773050-IL	7028071773050-IL	7028071773050-IL	
NSP		1..PCB TTL ASSY AMP7	7025HK1110025-IL	7025HK1109045-IL	7025HK1109055-IL	7025HK1109065-IL	7025HK1109075-IL	
	P60-19	2..AMP7 Assy	7028071731040-IL	7028071731020-IL	7028071731020-IL	7028071731020-IL	7028071731020-IL	
NSP		1..PCB TTL ASSY FHDMI	7025HK1110026-IL	Not used	Not used	Not used	Not used	
NSP		1..PCB TTL ASSY F-USB	7025HK1110027-IL	7025HK1109047-IL	7025HK1109057-IL	7025HK1109067-IL	7025HK1109077-IL	
	P60-21	2..F-USB Assy	7028071761020-IL	7028071761010-IL	7028071761010-IL	7028071761010-IL	7028071761010-IL	
NSP		1..PCB TTL ASSY BT	7025HK1110028-IL	7025HK1109048-IL	7025HK1109058-IL	7025HK1109068-IL	7025HK1109078-IL	
		PACKING SECTION						
	P57-1	AC Power Cord	Not used	L068125070060-IL	L068250100070-IL	L068250160020-IL	Not used	
	P57-7	Operating Instructions (CD-ROM)	6517000000550-IL	6517000000580-IL	6517000000590-IL	6517000000600-IL	6517000000610-IL	

Mark	No.	Symbol and Description	VSX-1127-K /CUXE	VSX-922-K /FXE	VSX-922-K /PWXE	VSX-922-K /DLXE	VSX-922-K /AXE5	Remarks	
A		Operating Instructions (En)(PDF)	ARB7478	Not used	ARB7476	ARB7476	Not used		
		Operating Instructions (Es)(PDF)	Not used	Not used	Not used	ARC8063	Not used		
		Operating Instructions (Zhcn)(PDF)	Not used	Not used	Not used	Not used	ARC8067		
		Operating Instructions (Zhtw)(PDF)	Not used	ARC8066	Not used	Not used	Not used		
NSP	P57-8	Quick Start Guide	57070000066590-IL	5707000006620-IL	5707000006630-IL	5707000006640-IL	5707000006650-IL		
	P57-9	Box, Gift	6007211820110-IL	6007211820170-IL	6007211820190-IL	6007211820180-IL	60072118201A0-IL		
	P57-12	Warranty Sheet Poly Bag	ARY7156 Not used	Not used Not used	Not used Not used	Not used 6330000240000-IL	ARY7137 Not used	AC Power Cord	
B	EXTERIOR SECTION								
	⚠ P60-23	Cord Assy	L068125101710-IL	Not used	Not used	Not used	L068250101710-IL		
	⚠ P60-24	Socket,Power AC	Not used	G430040560021-IL	G430040560021-IL	G430040560021-IL	Not used		
	⚠ P60-25	Power Trans 1021U	8200960611050-IL	8200960611070-IL	8200960611060-IL	8200960611060-IL	8200960611040-IL		
	P60-29	HDMI Conn-Cable	ADX7777	Not used	Not used	Not used	Not used		
	P60-33	F Input Sheet	1217211162040-IL	1217211792000-IL	1217211792000-IL	1217211792000-IL	1217211792000-IL		
	P60-35	Front Panel	3067215111020-IL	3067215491100-IL	3067215491100-IL	3067215491100-IL	3067215491100-IL		
	P60-36	Back Chassis	3207214216200S-IL	3207214206010-IL	3207214206030-IL	3207214206020-IL	3207214206110-IL		
	P60-37	Foot	4000210391000-IL	4007210391000-IL	4007210391000-IL	4007210391000-IL	4007210391000-IL		
	P60-44	Front HDMI Plate1122	4470212466000-IL	Not used	Not used	Not used	Not used		
P60-46	Window Lower	5077213123090-IL	50772131230A0-IL	50772131230A0-IL	50772131230A0-IL	50772131230A0-IL			
C	P60-64	Screw Stopper	Not used 4380040162010-IL	CBZ30P080FTB Not used	CBZ30P080FTB Not used	CBZ30P080FTB Not used	Not used 4380040162010-IL	No. 66	

Notes : The numbers in the remarks column correspond to the numbers on the "EXPLODED VIEWS".
For PCB ASSEMBLIES, Refer to "CONTRAST OF PCB ASSEMBLIES".

EXPLODED VIEWS EXTERIOR SECTION



CONTRAST OF PCB ASSEMBLIES

A F AUDIO ASSY

7028071741050-IL, 7028071741030-IL and 7028071741080-IL are constructed the same except for the following:

Mark	Symbol and Description	7028071741050-IL	7028071741030-IL	7028071741080-IL	Remarks
	IC2503 Electric VOL IC (2 ch)	BD3812F	BD3812F	Not used	

Note: For the above Assy's, apart from the registered parts for service described above, some nonregistered parts are also different.

B F AMP7 ASSY

Although 7028071731040-IL and 7028071731020-IL are different in part number and they are NOT COMPATIBLE, they consist of the same service components.

C F MAIN ASSY

7028071711010-IL, 7028071711030-IL and 7028071711090-IL are constructed the same except for the following:

Mark	Symbol and Description	7028071711010-IL	7028071711030-IL	7028071711090-IL	Remarks
	C76	D040682083000-IL	D040682084070-IL	D040682083000-IL	

Note: For the above Assy's, apart from the registered parts for service described above, some nonregistered parts are also different.

D F D-MAIN ASSY

7028071752020-IL, 7028071752050-IL and 7028071752060-IL are constructed the same except for the following:

Mark	Symbol and Description	7028071752020-IL	7028071752050-IL	7028071752060-IL	Remarks
	IC1403 Logic IC(Inverter)	Not used	J040740400270-IL	J040740400270-IL	
	IC1802 D/A Converter IC	AK4388ET	AK4388ET	Not used	
	IC1803 Zero Delay Buffer	IDT6V60008DCG	IDT6V60008DCG	Not used	
	IC9207 IC	TC74VHC08FK	TC74VHC08FK	Not used	
	JA1801 Pin Jack (2P)	G601206A0700Y-IL	G601206A0700Y-IL	Not used	
	JA1802 Ter, RCA 1pin	Not used	Not used	G60011703000Y-IL	
	JA1804 Module	E100216500010-IL	E100216500010-IL	Not used	

The mounting positions of the additional parts are described in the circuit diagram and PCB diagram of the parent manual.

Note: For the above Assy's, apart from the registered parts for service described above, some nonregistered parts are also different.

F F VIDEO ASSY

7028071712020-IL, 7028071712050-IL and 7028071712060-IL are constructed the same except for the following:

Mark	Symbol and Description	7028071712020-IL	7028071712050-IL	7028071712060-IL	Remarks
	IC1007 Character Generator	PDC162A	PDC162A	Not used	
	X1003 Crystal	E80014R318080-IL	E80014R318080-IL	Not used	
	JA1001 Ter, RCA 9pin	G607902AA151Y-IL	G607902AA151Y-IL	G607902AA133Y-IL	

Note: For the above Assy's, apart from the registered parts for service described above, some nonregistered parts are also different.

G F BRG ASSY

7028071773040-IL, 7028071773020-IL and 7028071773050-IL are constructed the same except for the following:

Mark	Symbol and Description	7028071773040-IL	7028071773020-IL	7028071773050-IL	Remarks
	IC2802 IC, Linear OP	J121458001010-IL	J121458001010-IL	Not used	

H F FRONT ASSY

7028071721050-IL, 7028071721030-IL, 70280717210D0-IL, 7028071721090-IL, 70280717210A0-IL, 70280717210B0-IL and 70280717210C0-IL are constructed the same except for the following:

Mark	Symbol and Description	7028071721050-IL	7028071721030-IL	70280717210D0-IL	Remarks
	R3021, R3022	C060R47065050-IL	C060001065060-IL	C060001065060-IL	

Mark	Symbol and Description	7028071721090-IL	70280717210A0-IL	70280717210B0-IL	70280717210C0-IL	Remarks
	R3021, R3022	C060001065060-IL	C060001065060-IL	C060001065060-IL	C060001065060-IL	

Note: For the above Assy's, apart from the registered parts for service described above, some nonregistered parts are also different.

K F FVIDEO ASSY

Although 7028071724040-IL and 7028071724020-IL are different in part number and they are NOT COMPATIBLE, they consist of the same service components.

L F HP ASSY

Although 7028071725040-IL and 7028071725020-IL are different in part number and they are NOT COMPATIBLE, they consist of the same service components.

N F G-R ASSY

There is no service parts.

S F FHDMI ASSY

Although 7028071791040-IL and 7028071791050-IL are different in part number and they are NOT COMPATIBLE, they consist of the same service components.

T F F-USB ASSY

Although 7028071761020-IL, 7028071781070-IL and 7028071761010-IL are different in part number and they are NOT COMPATIBLE, they consist of the same service components.

U F SMPS ASSY

7028071772010-IL, 7028071772020-IL, 70280717720C0-IL and 7028071772090-IL are constructed the same except for the following:

Mark	Symbol and Description	7028071772010-IL	7028071772020-IL	70280717720C0-IL	7028071772090-IL	Remarks
	D9101, 9103, 9105 D,zener	K06039R044520-IL	Not used	Not used	K06039R044520-IL	
	D9108, 9109 D,zener	K06039R044520-IL	C060010563520-IL	C060010563520-IL	K06039R044520-IL	
	D9110 D,zener	K06022R044520-IL	K06039R044520-IL	K06039R044520-IL	K06022R044520-IL	
	D9111, 9113, 9116, 9119 D,zener	Not used	K06039R044520-IL	K06039R044520-IL	Not used	
⚠	CN9100 CN.WAFER 7.92mm	L108396030010-IL	Not used	L108396030010-IL	Not used	
⚠	FU101 FUSE GLASS TUBE 20 mm	N751508001160-IL	N751506301160-IL	N751506301160-IL	N751508001160-IL	
⚠	R101	C060022563520-IL	Not used	Not used	C060022563520-IL	
	R104	C060022563520-IL	Not used	Not used	C060022563520-IL	
⚠	R105	C060010563520-IL	Not used	Not used	C060010563520-IL	

The mounting positions of the additional parts are described in the circuit diagram and PCB diagram of the parent manual.

Note: For the above Assy's, apart from the registered parts for service described above, some nonregistered parts are also different.

PCB PARTS LIST

Mark No. Description Part No.

W F GUIDE ASSY

MISCELLANEOUS

BRACKET

4010210196000-IL

2. SCHEMATIC DIAGRAM

2.1 GUIDE ASSY

WF GUIDE ASSY (7028071726020-IL)



WF

WF

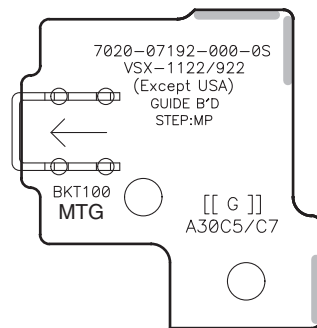
3. PCB CONNECTION DIAGRAM

3.1 GUIDE ASSY

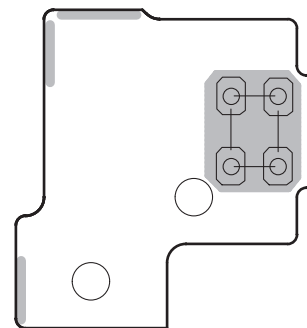
SIDE A

SIDE B

WF GUIDE ASSY



WF GUIDE ASSY



WF

WF